

Wave functions and Yukawa couplings in local string compactifications

Joseph P. Conlon,^{ab} Anshuman Maharana^b and Fernando Quevedo^b

^a*Cavendish Laboratory,*

J.J. Thomson Avenue, Cambridge CB3 0HE, U.K.

^b*DAMTP, Centre for Mathematical Sciences,*

Wilberforce Road, Cambridge, CB3 0WA, U.K.

E-mail: jpc41@cam.ac.uk, A.Maharana@damtp.cam.ac.uk,

f.quevedo@damtp.cam.ac.uk

ABSTRACT: We consider local models of magnetised D7 branes in IIB string compactifications, focussing on cases where an explicit metric can be written for the local 4-cycle. The presence of an explicit metric allows analytic expressions for the gauge bundle and for the chiral matter wavefunctions through solving the Dirac and Laplace equations. The triple overlap of the normalised matter wavefunctions generates the physical Yukawa couplings. Our main examples are the cases of D7 branes on $\mathbb{P}^1 \times \mathbb{P}^1$ and \mathbb{P}^2 . We consider both supersymmetric and non-supersymmetric gauge backgrounds and both Abelian and non-Abelian gauge bundles. We briefly outline potential phenomenological applications of our results.

KEYWORDS: Flux compactifications, Superstrings and Heterotic Strings, Intersecting branes models, D-branes.

Contents

1. Introduction	2
2. Dimensional reduction and the low energy action	4
2.1 Equations of motion	7
2.1.1 Vectors	7
2.1.2 Scalars	10
2.1.3 Fermions	11
2.2 Yukawa interactions	12
3. Compactification on \mathbb{P}^1	15
3.1 Fermions on \mathbb{P}^1	15
3.2 Scalars on \mathbb{P}^1	17
3.3 Vectors on \mathbb{P}^1	18
3.4 Normalisation and overlap integrals	20
4. Compactification on $\mathbb{P}^1 \times \mathbb{P}^1$	21
4.1 Fermions on $\mathbb{P}^1 \times \mathbb{P}^1$	21
4.1.1 Twisting of fermionic modes	23
4.1.2 Counting zero modes	25
4.2 Scalars on $\mathbb{P}^1 \times \mathbb{P}^1$	26
4.3 Vectors on $\mathbb{P}^1 \times \mathbb{P}^1$	27
4.4 Supersymmetry	30
4.5 Normalisation and overlap integrals	30
5. Compactification on \mathbb{P}^2	31
5.1 Scalars on \mathbb{P}^2	32
5.2 Fermions on \mathbb{P}^2	33
5.3 Normalisation and overlap integrals	39
5.4 Non-abelian bundles	40
6. Conclusions	42
A. Kaluza-Klein vector modes	45
B. Patches	46

1. Introduction

Understanding the structure of the Standard Model - the gauge groups, matter content and Yukawa couplings - represents one of the principal problems of theoretical physics. The Standard Model is not self-justifying and does not motivate a reason for its parameter values. Any deeper explanation of the Standard Model will therefore likely involve new physical ideas and concepts, possibly of a very different nature to those used in the Standard Model itself. In this respect string theory stands out as an attractive and powerful complex of ideas.

One attractive feature of string theory is that it naturally gives rise to chiral matter and non-Abelian gauge groups, thereby reproducing the gross features of the Standard Model. One of the main tasks of string phenomenology consists in finding vacuum configurations resembling, as closely as possible, the gauge group and matter content of the Standard Model. In the heterotic string this is achieved through appropriate gauge bundles and Wilson lines, while for the type II theories this requires an appropriate model of intersecting D-branes. Such constructions should be regarded as proofs of principle: no current construction reproduces all details of the Standard Model and, in any case, it is unclear what the desired low-energy matter content actually is, as nothing precludes the existence of extra massive vector-like matter. Recent reviews of string theoretic model building can be found in [1–5].

Such string constructions can be classified as either global or local. Global constructions rely on the topological features of the totality of a compact space, with the classic example being the weakly-coupled heterotic string where the spectrum and gauge group are determined by a bundle over the entire Calabi-Yau. In this case the gauge coupling is given by the volume of the entire Calabi-Yau. In local models, the principal avatar of which is models of branes at singularities [6], the gauge group and matter content depend only on local physics and are independent of the details of the bulk geometry. The distinction between global and local models is that in a global model the Standard Model gauge couplings always vanish in the limit that the bulk volume is taken to infinity; in local models such a limit leaves the gauge couplings finite. Recent years have seen a renewal of interest in local models, and examples of work in this direction include [7–15].

This is one of the most attractive features of local models. It is well-known that for global models the two control requirements of large volume and weak coupling can never be parametrically satisfied: the known running of the Standard Model gauge couplings implies that at the compactification scale

$$\alpha_{\text{SM}}^{-1} \sim 25 \sim \frac{\mathcal{V}}{l_s^6 g_s}. \quad (1.1)$$

A weak string coupling $g_s \sim 0.1$ therefore implies $\mathcal{V} \sim 2l_s^6$, making it difficult to control the α' expansion. However in local models eq. (1.1) no longer holds, allowing both large volume and weak coupling to be simultaneously realised. In some cases the use of local models can even be forced upon us by the moduli stabilisation procedure. An example is the LARGE volume scenario of [16, 17], where the volume is stabilised exponentially

large, thereby generating hierarchically small supersymmetry breaking. As $m_{3/2} \sim M_P/\mathcal{V}$, a TeV gravitino mass requires a volume $\mathcal{V} \sim 10^{15} l_s^6$, which implies that any realisation of the Standard Model in this scenario is necessarily a local realisation.

A second attractive feature of local models is that they drastically simplify the geometric complexity of model building. The local geometry is non-compact and typically involves far fewer moduli than the hundreds present in typical Calabi-Yaus. Local models can also be constructed on very simple geometries such as $\mathbb{C}^3/\mathbb{Z}_n$ singularities or their resolutions. In some cases the local Calabi-Yau metric is known exactly, in contrast to the cases of global compact Calabi-Yaus where no such explicit metrics are known. In the limit that the bulk volume is very large - which is the case for the LARGE volume models - the exact local metric is a parametrically good approximation to the true Calabi-Yau metric.

The knowledge of an explicit local metric has several consequences. The Laplace and Dirac equations can be solved directly, allowing the exact normalised wavefunctions of the chiral matter fields to be determined. Such wavefunctions give the extra-dimensional profile of the fields. In local models of magnetised D7 branes, the Yukawa couplings schematically descend from the triple overlap integral

$$\mathcal{L}_{\text{YUK}} = \int d^8x \bar{\psi} \Gamma^M [A_M, \psi]. \tag{1.2}$$

Using the form of the wavefunctions the triple overlap integrals of eq. (1.2) can be computed and the physical Yukawa couplings, including the non-holomorphic parts, can be evaluated. In contrast, algebro-geometric techniques, while very powerful in determining the holomorphic superpotential, are unable to determine the physical couplings which require knowledge of non-holomorphic functions such as the Kähler metrics. Furthermore, the presence of explicit metrics in principle also allows the spectrum and wavefunctions of Kaluza-Klein modes to be computed. While these will not contribute to the renormalisable Lagrangian, integrating out these modes will generate highly suppressed non-renormalisable operators. Kaluza-Klein modes are generically gauge singlets and thus in the R-parity MSSM count as right-handed neutrinos. Knowledge of the explicit form of such KK wavefunctions may then have important consequences for string theory models of neutrino masses and mixing matrices [18].

The use of explicit metrics to study wavefunctions and Yukawa couplings through direct dimensional reduction has been carried out in detail for toroidal models of magnetised D9 branes [19] (for a recent discussion for orbifolds of toroidal models see [20]). The purpose of this paper is to perform a similar analysis for models of magnetised D7 branes. We shall study in detail local models of magnetised D7 branes wrapping curved spaces. We aim to compute the chiral massless spectrum and wavefunctions, and use these to analyse the structure of the resulting overlap integrals and Yukawa couplings. Our two principal examples will be $\mathbb{P}^1 \times \mathbb{P}^1$ and \mathbb{P}^2 . The Dirac and Laplace equations on such geometries have also been studied in [21–25]. The local Calabi-Yau geometries these correspond to are $\mathcal{O}_{\mathbb{P}^1 \times \mathbb{P}^1}(-2, -2)$ and $\mathcal{O}_{\mathbb{P}^2}(-3)$. While the former admits chiral supersymmetric D7 brane configurations in the geometric regime, the latter does not. The $\mathcal{O}_{\mathbb{P}^2}(-3)$ geometry

is however of great interest as the resolution of the $\mathbb{C}^3/\mathbb{Z}_3$ singularity, which has played a central role in phenomenologically attractive models of branes at singularities [6].

This paper is organised as follows. In section 2 we describe the dimensional reduction of the D7 brane action, the classification of the four-dimensional fields that arise, the structure of the Yukawa couplings and the equations that need to be solved to determine the wavefunctions and Yukawa couplings. In section 3 we review the solutions of the Dirac and Laplace equations on \mathbb{P}^1 , while in sections 4 and 5 we study the cases of $\mathbb{P}^1 \times \mathbb{P}^1$ and \mathbb{P}^2 respectively. In these sections we also discuss the twisting of the Dirac and Laplace equations that is necessary to account for the curved nature of the D-brane embedding.

2. Dimensional reduction and the low energy action

In this section we aim to collect the equations of motion that are satisfied by the various fields, and to describe how the solutions of these equations can be used to compute the Yukawa couplings. We focus first on deriving the equations of motion that need to be satisfied to obtain scalar, fermion and vector zero modes, and subsequently describe the origin of the Yukawa couplings. The presence of a nontrivial brane embedding will cause the equations determining the zero modes to be twisted.

We start with the ten-dimensional $U(N)$ super-Yang Mills action, which will be dimensionally reduced to eight dimensions. The ten-dimensional action is

$$S = \frac{1}{g_{10}^2} \int d^{10}x \left(-\frac{1}{4} F_{MN} F^{MN} + \frac{1}{2} \bar{\psi} \Gamma^M \mathcal{D}_M \psi \right), \quad (2.1)$$

where ψ is a ten dimensional Weyl-Majorana spinor and $\mathcal{D}_M \psi = \nabla_M \psi - i[A_M, \psi]$. On reduction to eight dimensions the field content becomes one eight-dimensional gauge boson, $(A_M, M = 0 \dots 7)$, one complex scalar ($\phi_z = \phi_8 + i\phi_9$) and a single physical fermion λ . The action is

$$S = \frac{1}{g^2} \int d^8x \left(-\frac{1}{4} \text{Tr}\{F_{MN} F^{MN}\} - \frac{1}{2} \text{Tr}\{\mathcal{D}_M \phi^r \mathcal{D}^M \phi^r\} + i \text{Tr}\{\bar{\lambda} \gamma^M \mathcal{D}_M \lambda\} + \frac{i}{2} \bar{\lambda} \Gamma^r [\phi_r, \lambda] \right). \quad (2.2)$$

Here we retain the indices M, N for the 8d quantities and use the index r for the 8 – 9 directions. There are also additional quartic scalar interactions in eq. (2.2) that we will neglect as not relevant to our purposes. There is a $U(1)_R$ symmetry transverse to the brane, under which a field with R charge q is multiplied by $e^{iq\theta}$ under rotation by an angle θ in the 89 plane. The $U(1)_R$ charges of the fields are

$$Q_{A_M} = 0, \quad Q_{\lambda, \bar{\lambda}} = \pm 1/2, \quad Q_{\phi^8 \pm i\phi^9} = \pm 1.$$

where in writing $U(1)_R(\lambda) = 1/2$ we have treated λ as a Weyl fermion of positive chirality.

We want to decompose the eight dimensional fields into four-dimensional ones. For the bosonic degrees of freedom this is straightforward. The transverse scalar $\phi_z = \phi_8 + i\phi_9$ becomes

$$\phi_z(x, y) = \sum_i \phi^i(x) \phi_z^i(y),$$

where x refers to the 0, 1, 2, 3 directions and y to the 4, 5, 6, 7 directions. The eight dimensional vector decomposes into a 4 dimensional vector A_μ and 4 real scalars associated to the internal vector degrees of freedom A_m , $m = 4, 5, 6, 7$.

$$A_\mu(x, y) = \sum_i A_\mu^i(x) A^i(y), \quad A_m(x, y) = \sum_i \Phi^i(x) A_M^i(y).$$

To provide an explicit decomposition of the ten-dimensional Majorana-Weyl fermion, we start by taking the ten dimensional gamma matrices to be in a product representation,

$$\Gamma^\mu = \gamma^\mu \otimes \mathbb{I} \otimes \mathbb{I} \quad \Gamma^m = \gamma^5 \otimes \tilde{\gamma}^{m-3} \otimes \mathbb{I} \quad \Gamma^r = \gamma^5 \otimes \tilde{\gamma}^5 \otimes \tau^r, \quad (2.3)$$

where $\mu = 0 \dots 3$, $m = 4 \dots 7$, and $r = 8, 9$. γ^μ are the four dimensional Minkowski gamma matrices

$$\gamma^0 = \begin{pmatrix} 0 & -\mathbb{I} \\ \mathbb{I} & 0 \end{pmatrix} \quad \gamma^1 = \begin{pmatrix} 0 & \sigma_x \\ \sigma_x & 0 \end{pmatrix} \quad \gamma^2 = \begin{pmatrix} 0 & \sigma_y \\ \sigma_y & 0 \end{pmatrix} \quad \gamma^3 = \begin{pmatrix} 0 & \sigma_z \\ \sigma_z & 0 \end{pmatrix}, \quad (2.4)$$

while $\tilde{\gamma}^m$ are four dimensional Euclidean gamma matrices

$$\tilde{\gamma}^1 = \begin{pmatrix} 0 & -i\mathbb{I} \\ i\mathbb{I} & 0 \end{pmatrix} \quad \tilde{\gamma}^2 = \begin{pmatrix} 0 & \sigma_z \\ \sigma_z & 0 \end{pmatrix} \quad \tilde{\gamma}^3 = \begin{pmatrix} 0 & \sigma_x \\ \sigma_x & 0 \end{pmatrix} \quad \tilde{\gamma}^4 = \begin{pmatrix} 0 & \sigma_y \\ \sigma_y & 0 \end{pmatrix}. \quad (2.5)$$

The τ^a are Pauli matrices with $\tau^8 = \sigma^x$ and $\tau^9 = \sigma^y$. γ^5 and $\tilde{\gamma}^5$ denote the chirality matrices

$$\gamma^5 = \begin{pmatrix} \mathbb{I} & 0 \\ 0 & -\mathbb{I} \end{pmatrix}, \quad \tilde{\gamma}^5 = \begin{pmatrix} \mathbb{I} & 0 \\ 0 & -\mathbb{I} \end{pmatrix}. \quad (2.6)$$

The ten dimensional chirality matrix is $\Gamma = \gamma^5 \otimes \tilde{\gamma}^5 \otimes \sigma^z$, and a Weyl fermion λ is defined by $\lambda = \Gamma \lambda$. We can also define a Majorana matrix

$$B = \Gamma^2 \Gamma^4 \Gamma^7 \Gamma^9 = \begin{pmatrix} 0 & -\sigma_y \\ \sigma_y & 0 \end{pmatrix} \otimes \begin{pmatrix} -i\sigma_y & 0 \\ 0 & -i\sigma_y \end{pmatrix} \otimes \begin{pmatrix} 0 & -i \\ i & 0 \end{pmatrix}. \quad (2.7)$$

which satisfies $BB^* = \mathbb{I}$. The Majorana condition is $\lambda^* = B\lambda$, and we will require that λ be both Majorana and Weyl.

In writing the spinor it will be convenient to use the following notation. Spinors can be labelled by their chirality in each of the μ , m and r directions. We will use superscript to indicate positive chirality and subscript to indicate negative chirality, so the spinor $\lambda^{ab\alpha}$ has positive chirality ($a, b = 1, 2, 3, 4; \alpha = 1, 2$) in each of the μ , m and r directions. The Weyl condition restricts a general 10-dimensional spinor to

$$\{\lambda_1, \lambda_2, \lambda_3, \lambda_4\} = \{\lambda^{ab\alpha}, \lambda_{b\alpha}^a, \lambda_{ab}^\alpha, \lambda_a^b{}_\alpha\}.$$

From the form of the Majorana matrix (2.7), we see that its action corresponds to a chirality flip in both μ and 89 directions. The Majorana condition $\lambda^* = B\lambda$ therefore imposes relations between λ_1 and λ_4 , and λ_2 and λ_3 . A general Majorana-Weyl spinor can be schematically written as

$$\lambda_{MW} = (\lambda_1 + \lambda_4) \oplus (\lambda_2 + \lambda_3).$$

To be more explicit, we write the λ_i as

$$\begin{aligned}
 \lambda_1^{ab\alpha} &= \xi_1^a(x)\psi_1^b(y)\theta_1^\alpha(z), \\
 \lambda_{2, b\alpha}^a &= \xi_2^a(x)\psi_{2,b}(y)\theta_{2,\alpha}(z), \\
 \lambda_{3,ab}^\alpha &= \xi_{3,a}(x)\psi_{3,b}(y)\theta_3^\alpha(z), \\
 \lambda_{4,a}^b{}_\alpha &= \xi_{4,a}(x)\psi_4^b(y)\theta_{4,\alpha}(z).
 \end{aligned} \tag{2.8}$$

The Majorana condition $B^*\lambda^* = \lambda$ then imposes the constraints

$$\begin{aligned}
 \xi_4 &= -\sigma_y \xi_1^*, & \psi_4 &= -i\sigma_y \psi_1^*, & \theta_4 &= -i\theta_1^*. \\
 \xi_3 &= -\sigma_y \xi_2^*, & \psi_3 &= -i\sigma_y \psi_2^*, & \theta_3 &= i\theta_2^*.
 \end{aligned} \tag{2.9}$$

From a four dimensional viewpoint there are two distinct types of left-handed spinors, distinguished by their extra-dimensional chirality. These can be written as

$$\begin{aligned}
 \lambda_1 + \lambda_4 &= \begin{pmatrix} \xi_1 \\ 0 \end{pmatrix} \otimes \begin{pmatrix} \psi_1 \\ 0 \end{pmatrix} \otimes \begin{pmatrix} \theta_1 \\ 0 \end{pmatrix} + \begin{pmatrix} 0 \\ -\sigma_y \xi_1^* \end{pmatrix} \otimes \begin{pmatrix} -i\sigma_y \psi_1^* \\ 0 \end{pmatrix} \otimes \begin{pmatrix} 0 \\ -i\theta_1^* \end{pmatrix}, \\
 \lambda_2 + \lambda_3 &= \begin{pmatrix} \xi_2 \\ 0 \end{pmatrix} \otimes \begin{pmatrix} 0 \\ \psi_2 \end{pmatrix} \otimes \begin{pmatrix} 0 \\ \theta_2 \end{pmatrix} + \begin{pmatrix} 0 \\ -\sigma_y \xi_2^* \end{pmatrix} \otimes \begin{pmatrix} 0 \\ -i\sigma_y \psi_2^* \end{pmatrix} \otimes \begin{pmatrix} i\theta_2^* \\ 0 \end{pmatrix}.
 \end{aligned} \tag{2.10}$$

In terms of representation content under the $SU(2)_L \times SU(2)_R \sim SO(3, 1)$ of 4D Minkowski space, the $SU(2)_L \times SU(2)_R \sim SO(4)$ of the internal 4D space and the $U(1)_R$ we can write

$$\begin{aligned}
 \lambda_1 + \lambda_4 &= [(\mathbf{2}, \mathbf{1}) \otimes (\mathbf{2}, \mathbf{1})]_{1/2} \oplus [(\mathbf{1}, \mathbf{2}) \otimes (\mathbf{2}, \mathbf{1})]_{-1/2} \\
 \lambda_2 + \lambda_3 &= [(\mathbf{2}, \mathbf{1}) \otimes (\mathbf{1}, \mathbf{2})]_{-1/2} \oplus [(\mathbf{1}, \mathbf{2}) \otimes (\mathbf{1}, \mathbf{2})]_{1/2}.
 \end{aligned} \tag{2.11}$$

The subscript denotes the $U(1)_R$ charge. We will tend to use left-handed spinors in Minkowski space and will treat λ_1 and λ_2 as the two independent dynamical degrees of freedom, with λ_3 and λ_4 determined as above.

The geometric background we visualise is a stack of $(P + Q)$ D7 branes wrapped on a 4-cycle, with a magnetic flux background turned on P of the branes. The flux background breaks the original $U(P + Q)$ gauge group. In the case that a $U(1)$ bundle is turned on, the low energy gauge group is $U(P) \times U(Q)$. All fields start off valued in $\text{Adj}(\mathbf{P} + \mathbf{Q})$, but decompose and give bifundamentals under the flux background. An arbitrary field Φ can be written as

$$\Phi = \begin{pmatrix} W & X \\ Y & Z \end{pmatrix} = \begin{pmatrix} (\text{Adj}(\mathbf{P}), \mathbf{1}) & (\mathbf{P}, \bar{\mathbf{Q}}) \\ (\bar{\mathbf{P}}, \mathbf{Q}) & (\mathbf{1}, \text{Adj}(\mathbf{Q})) \end{pmatrix}. \tag{2.12}$$

Chiral bifundamental matter arises from zero modes descending from either the X or Y sectors. The X sector gives $(\mathbf{P}, \bar{\mathbf{Q}})$ modes and the Y sector $(\bar{\mathbf{P}}, \mathbf{Q})$ modes.

We suppose that M units of flux have been turned on in the W sector. When writing the Dirac or Laplace equations for the X or Y , the covariant derivative term $[A, \Phi]$ will imply that modes in the X (Y) sector are effectively charged under a $U(1)$ field with M ($-M$) units of flux. The number of fields in fundamental and anti-fundamental representations is determined by the number of zero modes with M ($-M$) units of flux, and the net chirality is given by $\mathcal{N}_{+M} - \mathcal{N}_{-M}$.

2.1 Equations of motion

In describing the equations of motion for the fields, we shall go into considerable detail for the vector modes, and then be more concise in our description of the scalar and fermion equations of motion.

An important general feature here is the fact that the brane is wrapping a cycle with a nontrivial normal bundle. This implies that many of the equations of motion will need to be twisted [26], reflecting the fact that the field is not scalar-valued but rather bundle-valued over the cycle. This does not however hold for the internal degrees of freedom valued in the tangent bundle, such as the (internal) vector modes. We first describe the equations of motion for scalar fields that come from vector degrees of freedom in the internal space.

2.1.1 Vectors

The equations of motion for vectors start from the Yang-Mills action

$$\mathcal{S}_{\text{YM}} = \int_{\mathcal{M}^4 \times \Sigma} \mathcal{L}_{\text{YM}} = -\frac{1}{4g^2} \int_{\mathcal{M}^4 \times \Sigma} \text{Tr} [F_{MN} F^{MN}] \tag{2.13}$$

with

$$F_{MN} = \nabla_M A_N - \nabla_N A_M - i[A_M, A_N].$$

A_M is valued in the adjoint representation of $U(N)$ and the action is invariant under the gauge transformation

$$A_M \rightarrow A_M + \partial_M \theta + i[\theta, A_M].$$

On dimensional reduction, the vector degrees of freedom give rise to a 4-dimensional vector (A_μ) and 4-dimensional scalars (A_i) arising from vectors in the internal space. As the vectors A_M are all valued in the tangent bundle, they are uncharged under the R-symmetry transverse to the brane. Their equations of motion are therefore not subject to twisting and can be found by a direct dimensional reduction of the action \mathcal{L}_{YM} on the surface Σ in the presence of a background magnetic field.

To establish notation and conventions, we start with the Lie algebra of $U(N)$. Our discussion will follow that in the appendix of [19]. The elements of the Lie algebra can be taken to be¹

$$(U_a)_{ij} = \delta_{ai} \delta_{aj}, \quad (e_{ab})_{ij} = \delta_{ai} \delta_{bj}, \quad (a \neq b).$$

The gauge field A_M is expanded as

$$A_M = B_M + W_M = B_M^a U_a + W_M^{ab} e_{ab}. \tag{2.14}$$

¹Although strictly e_{ab} is defined for $a \neq b$, for convenience of notation we will allow ourselves to write e_{ab} even when potentially $a = b$, an example being the last expression of eq. (2.15).

Requiring that $A_M^\dagger = A_M$ implies that B_M^a is real and $(W_M^{ab})^* = W_M^{ba}$. Let us state some useful relations for the U_a and e_{ab} :

$$\begin{aligned}
 (U_a)_{ij}(U_b)_{jk} &= \delta_{ab}(U_a)_{ik}, & [U_a, U_b]_{ik} &= (\delta_{ab})((U_a)_{ik} - (U_b)_{ik}) = 0. \\
 (U_a)_{ij}(e_{bc})_{jk} &= \delta_{ab}(e_{bc})_{ik}, & (e_{bc})_{ij}(U_a)_{jk} &= \delta_{ca}(e_{bc})_{ik}, \\
 & & [U_a, e_{bc}] &= (\delta_{ab} - \delta_{ac})e_{bc}. \\
 (e_{ab}e_{cd})_{ik} &= \delta_{bc}(e_{ad})_{ik}, & [e_{ab}, e_{cd}] &= \delta_{bc}(e_{ad}) - \delta_{ad}(e_{cb}).
 \end{aligned} \tag{2.15}$$

Also, $\text{Tr}(U_a) = 1$, $\text{Tr}(e_{bc}) = \delta_{bc}$, $\text{Tr}(U_a e_{bc}) = \delta_{abc}$, where $\delta_{abc} = 1$ if and only if a , b and c are all identical.

If we now write $A_M = B_M + W_M$, we can expand

$$\begin{aligned}
 \mathcal{L}_{\text{YM}} &= -\frac{1}{4g^2} \text{Tr} \left[(G^{MN} + D^M W^N - D^N W^M - i[W^M, W^N]) \times \right. \\
 &\quad \left. \times (G_{MN} + D_M W_N - D_N W_M - i[W_M, W_N]) \right]. \tag{2.16}
 \end{aligned}$$

Here $G_{MN} = \nabla_M B_N - \nabla_N B_M$ and $D_M W_N = \nabla_M W_N - i[B_M, W_N]$. Further expanding we obtain

$$\begin{aligned}
 \mathcal{L}_B &= -\frac{1}{4g^2} \text{Tr} [G_{MN} G^{MN}] \\
 &\quad -\frac{1}{2g^2} \text{Tr} \left[D_M W_N D^M W^N - D_M W_N D^N W^M - iG_{MN} [W^M, W^N] \right] \\
 &\quad +\frac{1}{4g^2} \text{Tr} [[W_M, W_N] [W^M, W^N]] + \frac{i}{2g^2} \text{Tr} \left[(D_M W_N - D_N W_M) [W^M, W^N] \right]. \tag{2.17}
 \end{aligned}$$

In backgrounds with Abelian magnetic flux, G_{MN} has a non-zero vev but W_M does not.² The fluctuations of W_M will correspond to zero modes of the low energy theory. We focus on the 2-point interactions, and neglect the 3- and 4-point interactions present in equation (2.17). Expanding the terms of (2.17) we obtain

$$\frac{i}{2g^2} \text{Tr} [G_{MN} [W^M, W^N]] = \frac{i}{4g^2} (G_{MN}^a - G_{MN}^b) (W^{Mab} W^{Nba} - W^{Nab} W^{Mba}). \tag{2.18}$$

We similarly obtain

$$\text{Tr}(D_M W_N D^M W^N) = (\tilde{D}_M W_N^{ba})(\tilde{D}^M W^{Nab}), \tag{2.19}$$

$$\text{Tr}(D_M W_N D^N W^M) = (\tilde{D}_M W_N^{ba})(\tilde{D}^N W^{Mab}). \tag{2.20}$$

where $\tilde{D}_M W_N^{ab} = \nabla_M W_N^{ab} - i(B_M^a - B_M^b)W_N^{ab}$. We write $\langle B \rangle_M^{ab} = B_M^a - B_M^b$.

We now expand about the background fields, writing

$$B_M^a(y) = \langle B_M^a(y) \rangle + \delta B_M^a(y), \tag{2.21}$$

$$W_M^{ab}(y) = 0 + \Phi_M^{ab}(y). \tag{2.22}$$

²For a careful study of vector modes in backgrounds with non-Abelian magnetic fluxes, such as used in section (5), we would need to construct analogous equations in which $\langle W_M^{ab} \rangle \neq 0$.

Then

$$\begin{aligned} \text{Tr} \left[D_M W_N D^M W^N - D_M W_N D^N W^M \right] &= D_\mu \Phi_i^{ba} D^\mu \Phi^{i,ab} + \tilde{D}_j \Phi_i^{ba} \tilde{D}^j \Phi^{i,ab} \\ &\quad - \tilde{D}_j \Phi_i^{ba} \tilde{D}^i \Phi^{j,ab} - 2(D_\mu \Phi_i^{ba})(\tilde{D}^i W^{\mu,ab}) \end{aligned}$$

The action becomes³

$$\begin{aligned} \mathcal{L}_{\text{YM}} &= \frac{i}{4g^2} \left(G_{ij}^a - G_{ij}^b \right) \left(\Phi^{i,ab} \Phi^{j,ba} - \Phi^{j,ab} \Phi^{i,ba} \right) - \frac{1}{2g^2} \left[(D_\mu \Phi_i^{ba} D^\mu \Phi^{i,ab}) \right. \\ &\quad \left. + (\tilde{D}_i \Phi_j^{ba} \tilde{D}^j \Phi^{i,ab}) - 2(\tilde{D}_i W_\mu^{ba})(D^\mu \Phi^{i,ab}) - (\tilde{D}_i \Phi_j^{ba})(\tilde{D}^j \Phi^{i,ab}) \right] \end{aligned} \quad (2.23)$$

There are extra interactions not included in (2.23), for example 3- and 4-point interactions, but these are less relevant for our purposes. Note that the covariant derivatives \tilde{D}^i reduce to ordinary derivatives in the absence of flux, $G_{ij}^a = 0$ - in this case the gauge connection generates only 3-point (or higher) interactions.

We want to examine this action and work out the mass eigenstates. We will do this term by term to work out the contributing parts.

- First,

$$\frac{i}{4g^2} \left(G_{ij}^a - G_{ij}^b \right) \left(\Phi^{i,ab} \Phi^{j,ba} - \Phi^{j,ab} \Phi^{i,ba} \right) = \frac{i}{2g^2} \Phi^{j,ba} \left(G_{ij}^a - G_{ij}^b \right) \Phi^{i,ab},$$

where we have used $G_{ij}^a = -G_{ji}^a$. We denote $G_{ij}^a - G_{ij}^b$ by $\langle G \rangle_{ij}^{ab}$. $\langle G \rangle_{ij}^{ab}$ represents the flux difference seen by the a and b sectors. In this case we can then write

$$\frac{i}{4g^2} \left(G_{ij}^a - G_{ij}^b \right) \left(\Phi^{i,ab} \Phi^{j,ba} - \Phi^{j,ab} \Phi^{i,ba} \right) = \frac{i}{2g^2} \Phi^{j,ba} \langle G \rangle_{ij}^{ab} \Phi^{i,ab}. \quad (2.24)$$

This generates a quadratic flux-dependent mass term.

- The next term we consider is the term

$$-2(D_\mu \Phi_i^{ba})(\tilde{D}^i W^{\mu ab}).$$

On integration by parts, these will both give rise to terms of the form

$$(\tilde{D}^i \Phi_i^{ba})(D_\mu W^{\mu ab}).$$

As we will impose the gauge-fixing condition ($\tilde{D}^i \Phi_i^{ab} = 0$), these will vanish and will not generate mass terms.

- The next non-trivial term is

$$\begin{aligned} \frac{1}{2g^2} \left(\tilde{D}_i \Phi_j^{ba} \right) \left(\tilde{D}^j \Phi^{i,ab} \right) &= -\frac{1}{2g^2} \Phi_j^{ba} \left(\tilde{D}_i \tilde{D}^j \Phi^{i,ab} \right) \\ &= -\frac{1}{2g^2} \Phi_j^{ba} \left([\tilde{D}_i, \tilde{D}^j] + \tilde{D}^j \tilde{D}_i \right) \Phi^{i,ab}. \end{aligned}$$

³This differs in the first term by a factor of $-1/2$ from the expression in (A.18) of [19].

We have integrated by parts here. As we have gauge-fixed $\tilde{D}_i \Phi^{i,ab} = 0$, we obtain

$$\frac{1}{2g^2} \left(\tilde{D}_i \Phi_j^{ba} \right) \left(\tilde{D}^j \Phi^{i,ab} \right) = -\frac{1}{2g^2} \Phi_j^{ba} [\tilde{D}_i, \tilde{D}^j] \Phi^{i,ab}$$

We need the action of $[\tilde{D}_i, \tilde{D}^j]$ on a vector field. Now,

$$\begin{aligned} [\tilde{D}_i, \tilde{D}_j] &= [\nabla_i - i\langle B \rangle_i^{ab}, \nabla_j - i\langle B \rangle_j^{ab}] \\ &= [\nabla_i, \nabla_j] - i \left(\nabla_i \langle B \rangle_j^{ab} - \nabla_j \langle B \rangle_i^{ab} \right) \\ &= [\nabla_i, \nabla_j] - i \langle G \rangle_{ij}^{ab}. \end{aligned} \quad (2.25)$$

We therefore obtain

$$\frac{1}{2g^2} \left(\tilde{D}_i \Phi_j^{ba} \right) \left(\tilde{D}^j \Phi^{i,ab} \right) = -\frac{1}{2g^2} \Phi_j^{ba} [\nabla_i, \nabla_j] \Phi^{i,ab} + \frac{i}{2g^2} \Phi_j^{ba} \langle G \rangle_{ij}^{ab} \Phi^{i,ab}. \quad (2.26)$$

Putting together the terms (2.24) and (2.26) considered so far, we have

$$\begin{aligned} \frac{i}{4g^2} \left(G_{ij}^a - G_{ij}^b \right) \left(\Phi^{iab} \Phi^{jba} - \Phi^{jab} \Phi^{iba} \right) + \frac{1}{2g^2} \left(\tilde{D}_i \Phi_j^{ba} \right) \left(\tilde{D}^j \Phi^{i,ab} \right) \\ = \frac{2i}{2g^2} \Phi_j^{ba} \langle G \rangle_{ij}^{ab} \Phi^{i,ab} - \frac{1}{2g^2} \Phi_j^{ba} [\nabla_i, \nabla_j] \Phi^{i,ab}. \end{aligned} \quad (2.27)$$

These represent the ‘extra’ terms that contribute to the vector action in addition to the naive $\tilde{D}_i \tilde{D}^i$ term, which gives

$$-\frac{1}{2g^2} \tilde{D}_i \Phi_j^{ba} \tilde{D}^i \Phi^{j,ab} = \frac{1}{2g^2} \Phi_j^{ba} \left(\tilde{D}_i \tilde{D}^i \Phi^{j,ab} \right) \quad (2.28)$$

We can finally combine equations (2.27) and (2.28) to write down the equation of motion satisfied by the vector modes,

$$\tilde{D}_i \tilde{D}^i \Phi_j^{ab} + 2i \langle G \rangle^{ab,i} \Phi_i^{ab} - [\nabla^i, \nabla_j] \Phi_i^{ab} = -m^2 \Phi_j^{ab}. \quad (2.29)$$

Eigenmodes of the vector fields are obtained by finding solutions of eq. (2.29) for Φ_i^{ab} . Zero modes correspond to solutions with vanishing m^2 . For intrinsically massive modes (such as KK modes), we show in the appendix that the masses and profiles of vector modes can be derived from those of the scalar modes.

We note that, regarded as a adjoint-valued vector in real coordinates, Φ_m^{ab} must satisfy $(\Phi_m^{ab})^* = \Phi_m^{ba}$ and so the ab modes determine the ba modes. Working with complex coordinates, we require $(\Phi_m^{ab})^* = \Phi_{\bar{m}}^{ba}$. In this notation, Φ_m^{ab} zero modes correspond to $(\mathbf{P}, \bar{\mathbf{Q}})$ complex scalars and $\Phi_{\bar{m}}^{ab} \equiv \Phi_m^{ba}$ zero modes correspond to $(\bar{\mathbf{P}}, \mathbf{Q})$ scalars.

2.1.2 Scalars

There are two degrees of freedom transforming as scalars in the extra dimensions. One corresponds to the $A_\mu \otimes 1$ mode that transforms as a vector in Minkowski space, and the other to the transverse scalar mode ϕ_M that is valued in the normal bundle. As for the vector, the scalar can be written as ϕ^{ab} . In the presence of an Abelian magnetic

flux background, $(\mathbf{P}, \bar{\mathbf{Q}})$ and $(\bar{\mathbf{P}}, \mathbf{Q})$ representations come from ϕ^{ab} modes with ab in the upper-right or lower-left blocks.

On dimensional reduction the basic equation determining 4-dimensional scalar modes is the Laplace equation on the compact space,

$$-\tilde{D}_i \tilde{D}^i \phi^{ab} = m^2 \phi^{ab}, \tag{2.30}$$

where \tilde{D}_i is the gauge-covariant derivative, $\tilde{D}_i \phi = \nabla_i \phi - i[A_i, \phi]$. For the $A_\mu \times 1$ mode, eq. (2.30) is sufficient. This mode has all degrees of freedom in the tangent bundle of the brane and so is untwisted. All eigenmodes can be found directly from solving (2.30).

In contrast, the transverse scalar mode is valued in the normal bundle and so must satisfy a twisted version of the Laplace equation. As the normal bundle has non-trivial curvature, the covariant derivatives must be modified to account for the curvature of the bundle. This modification is equivalent to assuming the existence of an additional flux background, proportional to the Kähler form, in the equations of motion. For cases where the cycle is rigid (i.e. the normal bundle has no holomorphic sections), in the absence of flux there are no solutions to $\tilde{D}_i \phi = 0$, and all eigenmodes are massive.

In this paper we shall never encounter cases where transverse scalars have zero modes in a supersymmetric flux background (according to [12], this can never occur in the geometric regime). For non-supersymmetric flux configurations, transverse scalars can have ‘zero modes’, although due to lack of supersymmetry these modes are not massless. The form of these ‘zero modes’ can be found by solving $\tilde{D}_i \phi = 0$, where \tilde{D}_i incorporates both the gauge connection and that due to twisting, to obtain the holomorphic section of the bundle.

2.1.3 Fermions

For the fermionic degrees of freedom the basic equation of motion is the twisted Dirac equation [26],

$$\Gamma^M \tilde{D}_M \psi^{ab} = 0. \tag{2.31}$$

\tilde{D}_M incorporates both the spin connection and the gauge connection due to the fluxes. We can write the fermion field ψ as

$$\psi = \begin{pmatrix} (\lambda_1) \\ (\lambda_2) \end{pmatrix}. \tag{2.32}$$

Here λ_1 and λ_2 are as in eq. (2.10). Both modes are left-handed in four dimensions but have opposite extra-dimensional chirality and opposite R-charges. The twisting consists in a shift in the effective magnetic flux felt by the fermions: as λ_1 and λ_2 have different R-charges the shift takes a different sign for the two modes.

The effect of the twisting is that the gauge connection is shifted by an amount equivalent to the normal bundle, in such a way that for a pure stack of wrapped branes a single constant zero mode exists in the absence of any magnetic flux. This zero mode, which comes from the λ_2 sector, corresponds to the gaugino of 4d super Yang-Mills.

In supersymmetric configurations, the λ_1 modes are fermionic partners of the scalar modes that come from internal A_M vector degrees of freedom. The λ_2 modes are fermionic partners of either the transverse scalars ϕ_i or the 4-dimensional vector bosons, $A_\mu \times 1$. The

equations of motion for the CPT partners λ_4 and λ_3 follow from those for λ_1 and λ_2 : the zero modes of these are determined by the λ_1, λ_2 modes as in eq. (2.9).

2.2 Yukawa interactions

Four dimensional scalar fields can arise either from the ϕ_z or A_M degrees of freedom, while fermions arise from λ either in the $(\lambda_1 + \lambda_4)$ or $(\lambda_2 + \lambda_3)$ structure. Yukawa couplings will combine two of the fermions with a scalar. From a higher dimensional perspective Yukawa couplings originate from the ten-dimensional fermion kinetic term

$$\int d^{10}x \text{Tr}(\bar{\lambda} \Gamma^m \mathcal{D}_m \lambda) \rightarrow \int d^{10}x \text{Tr}(\bar{\lambda} \Gamma^m [A_m, \lambda]).$$

To extract the gauge indices we write $\bar{\lambda} = \bar{\lambda}_I^{ab} e_{ab}$, $A_M = A_{M,J}^{cd} e_{cd}$, and $\lambda = \lambda_K^{ef} e_{ef}$, where I, J, K are all species indices. Using $\text{Tr}(e_{ab} e_{cd} e_{ef}) = \delta_{af} \delta_{bc} \delta_{de}$, we get

$$\text{Tr}(\bar{\lambda} \Gamma^M [A_M, \lambda]) = \left(\bar{\lambda}_I^{ab} \Gamma^M A_{M,J}^{bc} \lambda_K^{ca} - \bar{\lambda}_I^{ab} \Gamma^M A_{M,J}^{ca} \lambda_K^{bc} \right). \quad (2.33)$$

Once the species I, J, K are specified, the Yukawa couplings can be directly evaluated. As $\bar{\lambda} = \lambda^\dagger \Gamma^0$, the basic integral is

$$\int d^{10}x \left(\lambda_I^{\dagger, ab} \Gamma^0 \Gamma^M A_{M,J}^{bc} \lambda_K^{ca} - \lambda_I^{\dagger, ab} \Gamma^0 \Gamma^M A_{M,J}^{ca} \lambda_K^{bc} \right). \quad (2.34)$$

Here both λ_I and λ_K are 10-dimensional Majorana-Weyl spinors and so will either be of $(\lambda_1 + \lambda_4)$ or of $(\lambda_2 + \lambda_3)$ type.

Neglecting the gauge indices in (2.34), we can now focus on the spinor structure. The basic integral we need to evaluate is

$$\int d^{10}x \left(\lambda_I^{\dagger} \Gamma^0 \Gamma^M A_{M,J} \lambda_K \right). \quad (2.35)$$

This integral takes a different form depending on whether $M = 4, 5, 6, 7$ or $M = 8, 9$, correspond to the 4-dimensional scalar arising either from a vector mode valued in the D7 tangent bundle or a scalar valued in the normal bundle.

Transverse scalars

We first consider $M = 8, 9$, where the scalar mode corresponds to the transverse scalar. In this case

$$\Gamma^0 \Gamma^M = \begin{pmatrix} 0 & \mathbb{I} \\ \mathbb{I} & 0 \end{pmatrix} \otimes \begin{pmatrix} \mathbb{I} & 0 \\ 0 & -\mathbb{I} \end{pmatrix} \otimes (\tau^a), \quad (2.36)$$

which gives a chirality flip in both the 0, 1, 2, 3 and 8, 9 directions. To obtain a non-vanishing integral we therefore need λ_I and λ_K to be either both of the form $(\lambda_1 + \lambda_4)$ or both of the form $(\lambda_2 + \lambda_3)$.

We first assume the form $\lambda_I, \lambda_K = (\lambda_1 + \lambda_4)$, when the total Yukawa interaction is

$$\begin{aligned} \mathcal{L}_{\text{YUK}} &= \int d^{10}x \left(\lambda_{4,I}^\dagger \Gamma^0 \Gamma^M A_{M,J} \lambda_{1,K} + \lambda_{1,I}^\dagger \Gamma^0 \Gamma^M A_{M,J} \lambda_{4,K} \right) \quad (2.37) \\ &= \int d^{10}x \left(\xi_{4I}^\dagger(x) \xi_{1,K}(x) \right) \left(\psi_{4,I}^\dagger(y) \psi_{1,K}(y) \right) \begin{pmatrix} 0 & \theta_{4I}^\dagger(z) \\ \tau^a \phi_{aJ} \end{pmatrix} \begin{pmatrix} \theta_{1K} \\ 0 \end{pmatrix} + \\ &\quad + \left(\xi_{1I}^\dagger(x) \xi_{4,K}(x) \right) \left(\psi_{1,I}^\dagger(y) \psi_{4,K}(y) \right) \begin{pmatrix} 0 & \theta_{1I}^\dagger(z) \\ \tau^a \phi_{aJ} \end{pmatrix} \begin{pmatrix} \theta_{4K} \\ 0 \end{pmatrix}. \end{aligned}$$

Using the relations (2.9), we can express everything in terms of λ_1 alone, eliminating all λ_4 dependence. We take $(\theta_1(z) \ 0) = (1 \ 0)$ as fields only have a trivial dependence on the transverse coordinates. We obtain

$$\begin{aligned} \mathcal{L}_{\text{YUK}} &= \int -d^4x \left(\xi_{1I}^T(x) \sigma_y \xi_{1K}(x) \phi_J(x) \right) \int d^4y \left(\psi_{1I}^T(y) \sigma_y \psi_{1K}(y) \right) \phi_{z,J}(y) \\ &\quad + \int d^4x \left(\xi_{1I}^\dagger(x) \sigma_y \xi_{1K}^*(x) \phi_J(x) \right) \int d^4y \left(\psi_{1I}^\dagger(y) \sigma_y \psi_{1K}^*(y) \right) \phi_{\bar{z},J}(y). \quad (2.38) \end{aligned}$$

Here $\phi_{z(\bar{z})}(y) = \phi_8(y) + (-)i\phi_9(y)$. In four dimensional language these interactions correspond to the Yukawa interactions $\psi_I \psi_K \phi_J + \psi_I^* \psi_K^* \phi_J^*$, and the structure of this term is $\lambda_1 \lambda_1 \phi_i$. In terms of chiral superfields this corresponds to the interaction between two internal vector modes and one transverse scalar mode, consistent with the superpotential $W = h_{ijk} \mathbf{A}_i \mathbf{A}_j \Phi_k$ given in [12].

Therefore we will need to evaluate integrals of the form

$$\int d^4y \left(\psi_{1I}^T(y) \sigma_y \psi_{1K}(y) \right) \phi_{z,J}(y) \quad (2.39)$$

in order to determine the physical Yukawa couplings once the normalised wave functions for fermions and scalars are known.

We can perform a similar computation for fermions of the form $(\lambda_2 + \lambda_3)$. In this case similar manipulations show that the ‘Yukawa interaction’ is

$$\begin{aligned} \mathcal{L}_{\text{YUK}} &= \int d^{10}x \left(\lambda_{2,I}^\dagger \Gamma^0 \Gamma^M A_{M,J} \lambda_{3,K} + \lambda_{3,I}^\dagger \Gamma^0 \Gamma^M A_{M,J} \lambda_{2,K} \right), \\ &= \int d^4x \left(\xi_{2I}^T(x) \sigma_y \xi_{2K}(x) \phi_J(x) \right) \int d^4y \left(\psi_{2I}^T(y) \sigma_y \psi_{2K}(y) \right) \phi_{\bar{z},J}(y) \\ &\quad + \int d^4x \left(\xi_{2I}^\dagger(x) \sigma_y \xi_{2K}^*(x) \phi_J(x) \right) \int d^4y \left(\psi_{2I}^\dagger(y) \sigma_y \psi_{2K}^*(y) \right) \phi_{z,J}(y). \quad (2.40) \end{aligned}$$

However this case should not be interpreted as a Yukawa interaction. The structure of this term is $\lambda_2 \lambda_2 \phi$. The σ_y giving a chirality flip in the extra dimensions implies that, in the language of superfields, one of the λ_2 fermions is the fermionic part of a transverse scalar ϕ_i superfield whereas the other is necessarily the fermionic partner of a gauge boson vector superfield. This interaction is therefore a gauge interaction in 4-dimensions of the schematic form $\phi^* \tilde{A}_\mu \tilde{\phi}$, where the tildes denote fermions, and is the supersymmetrisation of the $\phi^* A_\mu \partial^\mu \phi$ gauge interaction.

Internal vector modes

We next consider $M = 4, 5, 6, 7$, when the 4d scalar arises from an internal vector mode valued in the D7 brane tangent bundle. In this case

$$\Gamma^0 \Gamma^M = \begin{pmatrix} 0 & \mathbb{I} \\ \mathbb{I} & 0 \end{pmatrix} \otimes \begin{pmatrix} \tilde{\gamma}^m \end{pmatrix} \otimes \mathbb{I}, \quad (2.41)$$

which generates a chirality flip in both the 0, 1, 2, 3 and 4, 5, 6, 7 directions. In this case to obtain a non-vanishing integral λ_I and λ_K must take different forms. We first consider the case $\lambda_K = (\lambda_1 + \lambda_4)$, and $\lambda_I = (\lambda_2 + \lambda_3)$. The total Yukawa interaction is

$$\begin{aligned} \mathcal{L}_{\text{YUK}} &= \int d^{10}x \lambda_{3,I}^\dagger \Gamma^0 \Gamma^M A_{M,J} \lambda_{1,K} + \lambda_{2,I}^\dagger \Gamma^0 \Gamma^M A_{M,J} \lambda_{4,K} \quad (2.42) \\ &= \int d^{10}x \left(\xi_{3I}^\dagger(x) \xi_{1,K}(x) \right) \left(\begin{pmatrix} 0 & \psi_{3,I}^\dagger(y) \\ \psi_{1,K}(y) & 0 \end{pmatrix} \right) \left(\tilde{\gamma}^M A_{MJ} \right) \left(\begin{pmatrix} \psi_{1,K}(y) \\ 0 \end{pmatrix} \right) \left(\theta_{3I}^\dagger(z) \theta_{1K} \right) \\ &\quad + \left(\xi_{2I}^\dagger(x) \xi_{4,K}(x) \right) \left(\begin{pmatrix} 0 & \psi_{2,I}^\dagger(y) \\ \psi_{4,K}(y) & 0 \end{pmatrix} \right) \left(\tilde{\gamma}^M A_{MJ} \right) \left(\begin{pmatrix} \psi_{4,K}(y) \\ 0 \end{pmatrix} \right) \left(\theta_{4I}^\dagger(z) \theta_{2K} \right). \end{aligned}$$

We again use the relations (2.9) to write everything in terms of λ_1 and λ_2 . We also use $(\theta_1(z) \ 0) = (1 \ 0)$, as fields will be brane-valued and so will have trivial dependence on the transverse coordinates. The Yukawa interactions then become

$$\begin{aligned} \mathcal{L}_{\text{YUK}} &= - \int d^4x \left(\xi_{2I}^T(x) \sigma_y \xi_{1K}(x) \phi_J(x) \right) \int d^4y \left(0 \ \psi_{2,I}^T \sigma_y \right) \left(\tilde{\gamma}^M A_{MJ} \right) \left(\begin{pmatrix} \psi_{1,K}(y) \\ 0 \end{pmatrix} \right) \\ &\quad + \int d^4x \left(\xi_{2I}^\dagger(x) \sigma_y \xi_{1K}^*(x) \phi_J(x) \right) \int d^4y \left(0 \ \psi_{2,I}^\dagger \sigma_y \right) \left(\tilde{\gamma}^M A_{MJ} \right) \left(\begin{pmatrix} \sigma_y \psi_{1,K}^*(y) \\ 0 \end{pmatrix} \right). \end{aligned}$$

Here $\phi(x)$ represents the 4-dimensional scalar field that is partnered to the vector fluctuation $A_M(y)$ in the low energy theory.

We can perform a similar computation for the case that $\lambda_K = (\lambda_2 + \lambda_3)$ and $\lambda_I = \lambda_1 + \lambda_4$, where we end up with

$$\begin{aligned} \mathcal{L}_{\text{YUK}} &= \int d^{10}x \lambda_{4,I}^\dagger \Gamma^0 \Gamma^M A_{M,J} \lambda_{2,K} + \lambda_{1,I}^\dagger \Gamma^0 \Gamma^M A_{M,J} \lambda_{3,K}, \quad (2.43) \\ &= \int d^4x \left(\xi_{1I}^T(x) \sigma_y \xi_{2K}(x) \phi_J(x) \right) \int d^4y \left(0 \ \psi_{1,I}^T \sigma_y \right) \left(\tilde{\gamma}^M A_{MJ} \right) \left(\begin{pmatrix} \psi_{2,K}(y) \\ 0 \end{pmatrix} \right) \\ &\quad - \int d^4x \left(\xi_{1I}^\dagger(x) \sigma_y \xi_{2K}^*(x) \phi_J(x) \right) \int d^4y \left(0 \ \psi_{1,I}^\dagger \sigma_y \right) \left(\tilde{\gamma}^M A_{MJ} \right) \left(\begin{pmatrix} \sigma_y \psi_{2,K}^*(y) \\ 0 \end{pmatrix} \right). \end{aligned}$$

In both cases the 4-dimensional interaction takes the form $\psi_I \psi_K \phi_J + \psi_I^* \psi_K^* \phi_J^*$, where the scalar comes from an internal vector mode. These interactions take the form $\lambda_1 \lambda_2 A_M$. In the language of chiral superfields, two of the fields (λ_1 and A_M) come from internal-vector superfields, whereas one (λ_2) comes from a transverse scalar superfield. The 4-dimensional interaction comes from the same superpotential $h_{ijk} \mathbf{A}_i \mathbf{A}_j \Phi_k$ that generated the interaction (2.38).

3. Compactification on \mathbb{P}^1

Having described the formalism we now want to apply it local models of wrapped D7 branes. However as a warm-up example we start by studying the spectrum of fermions, scalars and vectors on \mathbb{P}^1 with a non-trivial magnetic flux background. In sections 4 and 5 we move on to the more interesting cases of $\mathbb{P}^1 \times \mathbb{P}^1$ and \mathbb{P}^2 . We shall compare our results for \mathbb{P}^1 with those of [22, 24, 25], by finding explicit solutions of the Dirac equation.

\mathbb{P}^1 is the geometry of the Riemann sphere or the compactified complex plane. In complex coordinates the canonical metric on \mathbb{P}^1 is the Fubini-Study metric, which is equivalent to the round sphere metric with radius R . The metric is given by

$$ds^2 = \frac{4R^2 dz d\bar{z}}{(1 + z\bar{z})^2}. \quad (3.1)$$

3.1 Fermions on \mathbb{P}^1

To write the Dirac equation we need the spin connection. We choose an orthonormal set of tangent vectors (e^1, e^2) for the zweibein, with

$$e_z^1 = \frac{R}{(1 + z\bar{z})}, \quad e_{\bar{z}}^1 = \frac{R}{(1 + z\bar{z})}, \quad e_z^2 = \frac{iR}{(1 + z\bar{z})}, \quad e_{\bar{z}}^2 = \frac{-iR}{(1 + z\bar{z})}. \quad (3.2)$$

Raising the indices, we obtain

$$e^{1z} = \frac{(1 + z\bar{z})}{2R}, \quad e^{1\bar{z}} = \frac{(1 + z\bar{z})}{2R}, \quad e^{2z} = \frac{-i(1 + z\bar{z})}{2R}, \quad e^{2\bar{z}} = \frac{i(1 + z\bar{z})}{2R}. \quad (3.3)$$

The spin connection is given by

$$w_\mu^{ab} = \frac{1}{2} e^{a\nu} (\partial_\mu e_\nu^b - \partial_\nu e_\mu^b) - \frac{1}{2} e^{b\nu} (\partial_\mu e_\nu^a - \partial_\nu e_\mu^a) - \frac{1}{2} e^{\psi a} e^{\sigma b} (\partial_\psi e_{\sigma c} - \partial_\sigma e_{\psi c}) e_\mu^c, \quad (3.4)$$

which evaluates to

$$w_z^{12} = \frac{i\bar{z}}{(1 + z\bar{z})}, \quad w_{\bar{z}}^{12} = \frac{-iz}{(1 + z\bar{z})}. \quad (3.5)$$

In two dimensions the flat space gamma matrices can be chosen to be

$$\gamma^1 = \begin{pmatrix} 0 & 1 \\ 1 & 0 \end{pmatrix}, \quad \gamma^2 = \begin{pmatrix} 0 & -i \\ i & 0 \end{pmatrix}.$$

For future reference, we note that $\frac{1}{2}[\gamma^1, \gamma^2] = \gamma^{12} = i \begin{pmatrix} 1 & 0 \\ 0 & -1 \end{pmatrix} = i\sigma^3$. The curved space gamma matrices are

$$\gamma^z = e^{za} \gamma_a = \frac{1}{R} \begin{pmatrix} 0 & 0 \\ (1 + z\bar{z}) & 0 \end{pmatrix}, \quad \gamma^{\bar{z}} = e^{\bar{z}a} \gamma_a = \frac{1}{R} \begin{pmatrix} 0 & (1 + z\bar{z}) \\ 0 & 0 \end{pmatrix}. \quad (3.6)$$

We also want to turn on constant magnetic flux on the two sphere. The gauge field and field strength are

$$A_z = \frac{iM\bar{z}}{2(1 + \bar{z}z)}, \quad A_{\bar{z}} = \frac{-iMz}{2(1 + \bar{z}z)}, \quad F_{z\bar{z}} = \frac{-iM}{(1 + \bar{z}z)^2}. \quad (3.7)$$

with M integer. This field strength is quantised as $\int_{S^2} F = -2\pi M$. We can now write down the Dirac equation

$$\gamma^m \mathcal{D}_m \psi = 0, \tag{3.8}$$

where the covariant derivative \mathcal{D}_m is $\mathcal{D}_m = \partial_m + \frac{1}{4} w_{m\alpha\beta} \gamma^{\alpha\beta} - iA_m$, with $\gamma^{\alpha\beta} = \frac{1}{2}[\gamma^\alpha, \gamma^\beta]$. Using the above results, the Dirac equation can be written as

$$\frac{1}{R} \begin{pmatrix} 0 & (1+z\bar{z})\partial_{\bar{z}} - z\left(\frac{M+1}{2}\right) \\ (1+z\bar{z})\partial_z - \bar{z}\left(\frac{-M+1}{2}\right) & 0 \end{pmatrix} \begin{pmatrix} \psi_1 \\ \psi_2 \end{pmatrix} = 0$$

The equations for different chiralities decouple and the general solutions for zero modes ψ_1 and ψ_2 are

$$\begin{pmatrix} \psi_1 \\ \psi_2 \end{pmatrix} = \begin{pmatrix} f(\bar{z})(1+z\bar{z})^{\left(\frac{1-M}{2}\right)} \\ g(z)(1+z\bar{z})^{\left(\frac{1+M}{2}\right)} \end{pmatrix}, \tag{3.9}$$

where $f(\bar{z})$ and $g(z)$ are anti-holomorphic and holomorphic functions, constrained by normalisability.

In order to obtain physically relevant solutions we must impose that solutions are normalisable and well-defined. This first implies that only positive integral powers of z and \bar{z} be present in $f(\bar{z})$ and $g(z)$. We also demand that the solutions are square integrable, namely that

$$\int d^2z \sqrt{g} \psi^\dagger \psi \quad \text{is finite.} \tag{3.10}$$

In order to simplify our discussion we begin by focussing on ψ^1 .

$$\int d^2z \sqrt{g} \psi^{1\dagger} \psi^1 = 2 \int d^2z \frac{|f(\bar{z})|^2}{(1+z\bar{z})^{(M+1)}} \tag{3.11}$$

Let us now examine convergence properties at $z \rightarrow \infty$. For $M \leq 0$ there are no solutions for which the integral is convergent. However for $M > 0$, the integral is convergent if $f(\bar{z})$ is taken to be a polynomial of degree $M - 1$, thus giving M linearly independent solutions. For $M < 0$, similar arguments imply that ψ_2 has normalisable solutions with $g(z)$ a polynomial of degree $|M| - 1$.

Let us summarise these results:

- For $M > 0$, there are normalisable solutions for ψ_1 only. These are given by

$$\frac{f_{|M|-1}(\bar{z})}{(1+z\bar{z})^{\left(\frac{M-1}{2}\right)}} \tag{3.12}$$

where $f_{|M|-1}(\bar{z})$ is a polynomial of degree $M - 1$, giving $|M|$ linearly independent solutions.

- For $M < 0$, there are normalisable solutions for ψ_2 only. These are given by

$$\psi_2 = \frac{g_{|M|-1}(z)}{(1+z\bar{z})^{\left(\frac{|M|-1}{2}\right)}} \tag{3.13}$$

where $g_{|M|-1}(z)$ is a polynomial of degree $|M| - 1$, giving $|M|$ linearly independent solutions.

- For $M = 0$, there are no normalisable zero modes.

Twisting

If the \mathbb{P}^1 is embedded in a Calabi-Yau, the fermionic equations of motion will be twisted to account for the nontrivial normal bundle. The twist must incorporate the effect of the normal bundle and corresponds to a shift in the flux value $M \rightarrow M + 1$. A reason to see why this must occur is because a unfluxed stack of D-branes wrapped on a \mathbb{P}^1 embedded in a Calabi-Yau is supersymmetric. The twisting is necessary to ensure that the constant gaugino zero mode exists. After the twisting procedure, the fermionic solutions become

$$\begin{pmatrix} \psi_1 \\ \psi_2 \end{pmatrix} = \begin{pmatrix} f(\bar{z})(1+z\bar{z})^{-\frac{M}{2}} \\ g(z)(1+z\bar{z})^{(1+\frac{M}{2})} \end{pmatrix}. \quad (3.14)$$

The number of zero modes of the twisted Dirac equation is then $|M - 1|$.

3.2 Scalars on \mathbb{P}^1

The scalar spectrum on \mathbb{P}^1 is determined by solving

$$-g^{\mu\nu} D_\mu D_\nu \phi = -(g^{z\bar{z}} D_z D_{\bar{z}} + g^{\bar{z}z} D_{\bar{z}} D_z) \phi = m^2 \phi. \quad (3.15)$$

Here D_z and $D_{\bar{z}}$ are covariant derivatives, incorporating the gauge and geometric connections. Acting on a scalar they are given by

$$\begin{aligned} D_z \phi &= (\partial_z - iA_z) \phi = \left(\partial_z + \frac{M\bar{z}}{2(1+z\bar{z})} \right) \phi, \\ D_{\bar{z}} \phi &= (\partial_{\bar{z}} - iA_{\bar{z}}) \phi = \left(\partial_{\bar{z}} - \frac{Mz}{2(1+z\bar{z})} \right) \phi. \end{aligned} \quad (3.16)$$

We note that

$$[D_z, D_{\bar{z}}] \phi = -iF_{z\bar{z}} \phi = -\frac{M}{(1+z\bar{z})^2} \phi. \quad (3.17)$$

We can then write

$$\begin{aligned} -g^{\mu\nu} D_\mu D_\nu \phi &= -(g^{z\bar{z}} D_z D_{\bar{z}} + g^{\bar{z}z} D_{\bar{z}} D_z) \phi \\ &= -2g^{z\bar{z}} D_{\bar{z}} D_z \phi - g^{\bar{z}z} [D_z, D_{\bar{z}}] \phi \\ &= -2g^{z\bar{z}} D_{\bar{z}} D_z \phi + \frac{M}{2R^2} \phi. \end{aligned} \quad (3.18)$$

The spectrum of $-2g^{z\bar{z}} D_{\bar{z}} D_z$ is positive semi-definite, which follows from arguments similar to those used to show the spectrum of the scalar Laplacian on a compact manifold is positive semi-definite.

We can now analyse the spectrum. The simplest case is $M = 0$, for which the lowest mode has eigenvalue zero and is constant over the two sphere. For $M > 0$, we know from our analysis of the Dirac equation that D_z has zero modes, and thus the lowest mass modes can be obtained by choosing wavefunctions ϕ , such that $D_z \phi = 0$. These modes have mass $\frac{M}{2}$ and degeneracy $|M| + 1$. Note that $D_z \phi = 0$ are the same equations solved in the fermionic analysis, subject to a shift in the effective value of M . The shift is due to the fact that fermions couple to the curvature of the sphere. As the field strength of the

Dirac monopole is proportional to the Kähler form, the effect of the curvature precisely corresponds to a shift in the value of M .

An identical argument for $M < 0$ shows that the lowest modes have mass $\frac{|M|}{2}$ in this case, and are given by the solutions of $D_{\bar{z}}\phi = 0$. The lowest modes are therefore always massive for $M \neq 0$, with the forms of the solutions being

$$\begin{aligned}
 M > 0 : \quad \phi(z, \bar{z}) &= \frac{f_M(\bar{z})}{(1+z\bar{z})^{|M|/2}}, & m^2 &= \frac{|M|}{2R^2}, \\
 M = 0 : \quad \phi(z, \bar{z}) &= \phi_0, & m^2 &= 0, \\
 M < 0 : \quad \phi(z, \bar{z}) &= \frac{f_M(z)}{(1+z\bar{z})^{|M|/2}}, & m^2 &= \frac{|M|}{2R^2}.
 \end{aligned}
 \tag{3.19}$$

where f_M is a holomorphic polynomial of degree M . The restriction to degree M is to ensure that the wavefunctions are square integrable, namely that $\int \sqrt{g}\phi^*\phi$ is finite. The fact that the polynomial is of degree M implies that the degeneracy of the zero mode solutions is $|M| + 1$.

Twisting

As the normal bundle is nontrivial, scalars which correspond to transverse deformations of branes wrapped on \mathbb{P}^1 will be twisted. This follows from the fact that, embedded into a Calabi-Yau, the normal bundle has no global sections due to the adjunction formula. Transverse deformations of the brane are therefore automatically massive, and so in the zero flux case no massless modes can exist. The twisting will correspond to a shift in the flux, $M \rightarrow M + 1$, such that in the absence of flux there are no massless scalar modes.⁴

3.3 Vectors on \mathbb{P}^1

We finally want to study vector zero modes on \mathbb{P}^1 in the fluxed case. As derived in the general case, we start with the equation

$$\tilde{D}_i \tilde{D}^i \Phi_{j,ab} + 2i \langle G \rangle^{ab,i}{}_j \Phi_{i,ab} - [\nabla^i, \nabla_j] \Phi_{i,ab} = -m^2 \Phi_{i,ab}.
 \tag{3.20}$$

We will assume $a > b$ for definiteness. The fluxes are

$$G_z{}^z{}^{ab} = \frac{iM}{2R^2}, \quad G_{\bar{z}}{}^{\bar{z}}{}^{ab} = \frac{-iM}{2R^2}.$$

The gauge-fixing condition that we impose is

$$\tilde{D}_i \Phi^{i,ab} = g^{z\bar{z}} (\tilde{D}_z \Phi_{\bar{z}}^{ab} + \tilde{D}_{\bar{z}} \Phi_z^{ab}) = 0.$$

For zero-modes (or their equivalent) we expect to find the mode by solving first-order equations. We will do this either through $\Phi_{\bar{z}}^{ab} = 0$ and $\tilde{D}_{\bar{z}} \Phi_z^{ab} = 0$, or with the opposite $z \rightarrow \bar{z}$ replacement. The non-zero elements of the mode in the $(\mathbf{P}, \bar{\mathbf{Q}})$ representation will

⁴The fluxed case is always non-supersymmetric. While in the fluxed case ‘zero modes’ can exist, in the sense that holomorphic sections of the bundle exist, the scalar ‘zero modes’ are not massless due to the lack of supersymmetry.

therefore be Φ_z^{ab} and $\Phi_{\bar{z}}^{ba} = (\Phi_z^{ab})^*$. The $(\bar{\mathbf{P}}, \mathbf{Q})$ representation will correspond to Φ_z^{ba} and $\Phi_{\bar{z}}^{ab} = (\Phi_z^{ba})^*$.

Throughout this section we shall assume this ansatz for the vector modes, focussing on the zero modes rather than on the massive KK states. Let us evaluate the effect of the curvature term on such vector modes, first assuming $\Phi_z^{ab} \neq 0$ and $\Phi_{\bar{z}}^{ab} = 0$. We can write

$$\begin{aligned} [\nabla_i, \nabla_j] \Phi^{i,ab} &= g^{ik} [\nabla_i, \nabla_j] \Phi_k^{ab} = g^{\bar{z}z} [\nabla_{\bar{z}}, \nabla_z] \Phi_z^{ab} \\ &= g^{\bar{z}z} (-\partial_{\bar{z}} \Gamma_{zz}^z) \Phi_z^{ab} \\ &= \frac{(1+z\bar{z})^2}{2R^2} \left(\frac{2}{(1+z\bar{z})^2} \Phi_z^{ab} \right) = \frac{\Phi_z^{ab}}{R^2}. \end{aligned} \quad (3.21)$$

We obtain a similar expression for $\Phi_{\bar{z}}^{ab}$. This allows us to write

$$\begin{aligned} 2i \langle G \rangle^{ab,z} \Phi_{z,ab} - [\nabla^z, \nabla_{\bar{z}}] \Phi_{z,ab} &= \frac{1}{R^2} (-M-1) \Phi_{z,ab}, \\ 2i \langle G \rangle^{ab,\bar{z}} \Phi_{\bar{z},ab} - [\nabla^{\bar{z}}, \nabla_z] \Phi_{\bar{z},ab} &= \frac{1}{R^2} (M-1) \Phi_{\bar{z},ab}. \end{aligned} \quad (3.22)$$

We finally want to evaluate the Laplacian acting on Φ_z^{ab} , $\tilde{D}_i \tilde{D}^i \Phi_z^{ab}$. Expanding this out and using $\tilde{D}_i \Phi^{i,ab} = 0$, we obtain

$$\tilde{D}_i \tilde{D}^i \Phi_z^{ab} = \left[g^{z\bar{z}} \left(\tilde{D}_z^s \tilde{D}_{\bar{z}}^s + \tilde{D}_{\bar{z}}^s \tilde{D}_z^s \right) - g^{z\bar{z}} \partial_{\bar{z}} \Gamma_{zz}^z \right] \Phi_z^{ab} \quad (3.23)$$

where \tilde{D}^s denotes the scalar covariant derivative, $\tilde{D}_i^s \Phi^{ab} = (\partial_i - i(\langle A_i \rangle^a - \langle A_i \rangle^b)) \Phi^{ab}$. We can simplify (3.23) by commuting the covariant derivatives through, to obtain

$$\tilde{D}_i \tilde{D}^i \Phi_z^{ab} = g^{z\bar{z}} \tilde{D}_z^s \tilde{D}_{\bar{z}}^s \Phi_z^{ab} + \left(\frac{M}{2} + 1 \right) \frac{\Phi_z^{ab}}{R^2}. \quad (3.24)$$

Combining all terms, we obtain

$$\tilde{D}_i \tilde{D}^i \Phi_{z,ab} + 2i \langle G \rangle^{ab,z} \Phi_{z,ab} - [\nabla^z, \nabla_{\bar{z}}] \Phi_{z,ab} = \left(g^{z\bar{z}} \tilde{D}_z^s \tilde{D}_{\bar{z}}^s - \frac{M}{2} \right) \frac{\Phi_z^{ab}}{R^2} = -m^2 \frac{\Phi_z^{ab}}{R^2}. \quad (3.25)$$

Performing a similar calculation for $\Phi_{\bar{z}}$ gives

$$\tilde{D}_i \tilde{D}^i \Phi_{\bar{z},ab} + 2i \langle G \rangle^{ab,\bar{z}} \Phi_{\bar{z},ab} - [\nabla^{\bar{z}}, \nabla_z] \Phi_{\bar{z},ab} = \left(g^{z\bar{z}} \tilde{D}_{\bar{z}}^s \tilde{D}_z^s + \frac{M}{2} \right) \frac{\Phi_{\bar{z}}^{ab}}{R^2} = -m^2 \frac{\Phi_{\bar{z}}^{ab}}{R^2}. \quad (3.26)$$

The lowest mass state is therefore tachyonic with a mass $-|M|/2R^2$, and is obtained by solving $D_{\bar{z}}^s \Phi_z^{ab} = 0$ (for $M < 0$) or $D_z^s \Phi_{\bar{z}}^{ab} = 0$ (for $M > 0$). Note that solving $D_{\bar{z}}^s \Phi_z^{ab} = 0$ automatically ensures that $D_z^s \Phi_{\bar{z}}^{ba} = 0$.

For the zero mode solution to exist, we require $|M| \geq 2$, with a zero mode degeneracy of $|M| - 1$. This is due to constraints on normalisability. The solution of the zero mode equation with $M < 0$ units of flux gives

$$D_{\bar{z}}^s \Phi_z^{ab} = 0 \rightarrow \Phi_z^{ab} = f(z) (1+z\bar{z})^{-\frac{|M|}{2}}.$$

The normalisability condition is that

$$\int \sqrt{g} g^{ij} \Phi_i^{ab} \Phi_j^{ba}$$

be finite, which requires that $g^{ij} \Phi_i^{ab} \Phi_j^{ba}$ does not diverge as $z \rightarrow \infty$. As $g^{z\bar{z}} = \frac{(1+z\bar{z})^2}{2}$, this requires $|M| \geq 2$ for any zero mode solutions to exist. It also follows easily from this condition that f has to be a polynomial of degree $|M| - 2$ and therefore the degeneracy of zero modes is given by $|M| - 1$. All such zero modes are chiral, in the sense that they correspond to $|M| - 1$ complex scalar fields in the $(\mathbf{P}, \bar{\mathbf{Q}})$ representation of the gauge group.

3.4 Normalisation and overlap integrals

The functional form of the lowest lying modes takes the same form independent of whether the mode is scalar, vector or spinorial. Introducing a normalisation constant \mathcal{N}_M^K , we can write a generic zero mode wavefunction ψ_M^K as (we take $M > 0$)

$$\psi_M^K = \frac{1}{\mathcal{N}_M^K} \frac{z^K}{(1+z\bar{z})^{\frac{M-1}{2}}}. \quad (3.27)$$

Then

$$|\mathcal{N}_M^K|^2 = \int d^2z \sqrt{g} \psi^\dagger \psi = 4R^2 \int \frac{dx dy (z\bar{z})^K}{(1+z\bar{z})^{M+1}} = 8\pi R^2 \int \frac{dr r^{2K+1}}{(1+r^2)^{M+1}}. \quad (3.28)$$

Expressions for wavefunction overlaps will involve a similar integral, as any integral with differing powers of z and \bar{z} will automatically vanish when the angular integration is performed. We therefore define the standard integral

$$\int \frac{dr r^{2K+1}}{(1+r^2)^{M+1}} = \frac{\Gamma(K+1)\Gamma(M-K)}{2\Gamma(M+1)} \equiv I_M^K, \quad (3.29)$$

where the evaluation can be performed using the substitution $r = \tan \theta$ and the relation

$$\int_0^{\pi/2} d\theta \sin^{2p-1}(\theta) \cos^{2q-1}(\theta) = \frac{\Gamma(p)\Gamma(q)}{2\Gamma(p+q)}. \quad (3.30)$$

The normalisation constant \mathcal{N}_M^K is therefore given by

$$|\mathcal{N}_M^K|^2 = \frac{4\pi R^2 \Gamma(K+1)\Gamma(M-K)}{\Gamma(M+1)} = 8\pi R^2 I_M^K. \quad (3.31)$$

The non-vanishing triple overlap integrals relevant for Yukawa couplings can also be computed in terms of these closed form integrals and take the form:

$$\begin{aligned} Y_{MNP}^{KL} &= \frac{1}{\mathcal{N}_M^K \mathcal{N}_N^L \mathcal{N}_P^{K+L}} \int \frac{d^2z \sqrt{g} z^K z^L \bar{z}^{K+L}}{(1+z\bar{z})^{\frac{M-1}{2}} (1+z\bar{z})^{\frac{N-1}{2}} (1+z\bar{z})^{\frac{P-1}{2}}} \\ &= \frac{8\pi R^2}{\mathcal{N}_M^K \mathcal{N}_N^L \mathcal{N}_P^{K+L}} I_{\frac{M+N+P-1}{2}}^{K+L} \end{aligned} \quad (3.32)$$

The canonical \mathbb{P}^1 metric has the $SO(3)$ symmetry of the 2-sphere. This implies that zero modes fall into $SO(3)$ representations, both in degeneracy and in structure. The $SO(3)$ acts as a flavour symmetry, as it relates different zero modes with the same gauge charges. The $SO(3)$ flavour symmetry will govern the Yukawa couplings, which are determined by the representation theory of $SO(3)$. In the limit that the compact space really is compact, the $SO(3)$ isometry of \mathbb{P}^1 will be broken, and the Yukawa couplings will be governed by an approximate $SO(3)$ symmetry.

4. Compactification on $\mathbb{P}^1 \times \mathbb{P}^1$

We now move onto models involving D7 branes, starting with $\mathbb{P}^1 \times \mathbb{P}^1 \equiv \mathbb{F}^0$ as the simplest appropriate geometry. Our interest is not in compactification on $\mathbb{P}^1 \times \mathbb{P}^1$ *per se*, but rather on $\mathbb{P}^1 \times \mathbb{P}^1$ embedded in a Calabi-Yau. The tangent bundle of \mathbb{P}^1 has $c_1(\mathbb{P}^1) = 2J$, which is $\mathcal{O}_{\mathbb{P}^1}(2)$. From the adjunction formula and the triviality of the first Chern class for a Calabi-Yau it therefore follows that the normal bundle to $\mathbb{P}^1 \times \mathbb{P}^1$ is $\mathcal{O}_{\mathbb{P}^1 \times \mathbb{P}^1}(-2, -2)$. The fact that this is nontrivial indicates that the gauge theory will be twisted, and the fact that the normal bundle has no global sections indicates that we can sensibly consider this as a local model.

We will assume that the Calabi-Yau metric restricted to the minimal volume $\mathbb{P}^1 \times \mathbb{P}^1$ is canonical, $ds^2_{\mathbb{P}^1 \times \mathbb{P}^1} = R_1^2 ds^2_{\mathbb{P}^1} \otimes R_2^2 ds^2_{\mathbb{P}^1}$. While we do not know of an analytic expression for the full Calabi-Yau case, we make this assumption on analogy with the \mathbb{P}^1 case, where the non-compact Eguchi-Hanson metric restricts to the canonical \mathbb{P}^1 metric on the minimal area \mathbb{P}^1 , and the case of the resolution of $\mathbb{C}^3/\mathbb{Z}_3$, where the non-compact Calabi-Yau metric restricts to the canonical Fubini-Study metric on the resolving \mathbb{P}^2 .

We denote the coordinates on the two \mathbb{P}^1 s by z and w . The $\mathbb{P}^1 \times \mathbb{P}^1$ metric is

$$ds^2 = \frac{4R_1^2 dz d\bar{z}}{(1+z\bar{z})^2} + \frac{4R_2^2 dw d\bar{w}}{(1+w\bar{w})^2} \tag{4.1}$$

and so

$$g_{z\bar{z}} = \frac{2R_1^2}{(1+z\bar{z})^2}, \quad g_{w\bar{w}} = \frac{2R_2^2}{(1+w\bar{w})^2}, \quad g^{z\bar{z}} = \frac{(1+z\bar{z})^2}{2R_1^2}, \quad g^{w\bar{w}} = \frac{(1+w\bar{w})^2}{2R_2^2}.$$

4.1 Fermions on $\mathbb{P}^1 \times \mathbb{P}^1$

We want to study the massless fermion spectrum on $\mathbb{P}^1 \times \mathbb{P}^1$. We first construct and solve the fluxed Dirac equation on $\mathbb{P}^1 \times \mathbb{P}^1$, and then describe how this is twisted to account for the non-trivial normal bundle. Using the metric we construct a vielbein

$$e_z^1 = \frac{R_1}{1+z\bar{z}}, \quad e_{\bar{z}}^1 = \frac{R_1}{1+z\bar{z}}, \quad e_w^1 = 0, \quad e_{\bar{w}}^1 = 0. \tag{4.2}$$

$$e_z^2 = \frac{iR_1}{1+z\bar{z}}, \quad e_{\bar{z}}^2 = \frac{-iR_1}{1+z\bar{z}}, \quad e_w^2 = 0, \quad e_{\bar{w}}^2 = 0. \tag{4.3}$$

$$e_z^3 = 0, \quad e_{\bar{z}}^3 = 0, \quad e_w^3 = \frac{R_2}{1+w\bar{w}}, \quad e_{\bar{w}}^3 = \frac{R_2}{1+w\bar{w}}. \tag{4.4}$$

$$e_z^4 = 0, \quad e_{\bar{z}}^4 = 0, \quad e_w^4 = \frac{iR_2}{1+w\bar{w}}, \quad e_{\bar{w}}^4 = \frac{-iR_2}{1+w\bar{w}}. \tag{4.5}$$

As the metric factorises, both the vielbein and the spin connection can be broken down into separate parts. Using the results of section 3 for \mathbb{P}^1 , the spin connection is

$$\omega_z^{12} = \frac{i\bar{z}}{(1+z\bar{z})}, \quad \omega_{\bar{z}}^{12} = \frac{-iz}{1+z\bar{z}}, \quad \omega_w^{34} = \frac{i\bar{w}}{(1+w\bar{w})}, \quad \omega_{\bar{w}}^{34} = \frac{-iw}{1+w\bar{w}}.$$

The fact that the metric is a direct product implies there are no cross-terms such as 13 or 24.

The gamma matrices are defined in a coordinate basis through $\tilde{\gamma}^\alpha = e^{\alpha i} \tilde{\gamma}_i$, giving

$$\tilde{\gamma}^z = e^{z1} \tilde{\gamma}_1 + e^{z2} \tilde{\gamma}_2 = \left(\frac{1+z\bar{z}}{2R_1} \right) (\tilde{\gamma}_1 - i\tilde{\gamma}_2), \quad (4.6)$$

$$\tilde{\gamma}^{\bar{z}} = e^{\bar{z}1} \tilde{\gamma}_1 + e^{\bar{z}2} \tilde{\gamma}_2 = \left(\frac{1+z\bar{z}}{2R_1} \right) (\tilde{\gamma}_1 + i\tilde{\gamma}_2), \quad (4.7)$$

$$\tilde{\gamma}^w = e^{w3} \tilde{\gamma}_3 + e^{w4} \tilde{\gamma}_4 = \left(\frac{1+w\bar{w}}{2R_2} \right) (\tilde{\gamma}_3 - i\tilde{\gamma}_4), \quad (4.8)$$

$$\tilde{\gamma}^{\bar{w}} = e^{\bar{w}3} \tilde{\gamma}_3 + e^{\bar{w}4} \tilde{\gamma}_4 = \left(\frac{1+w\bar{w}}{2R_2} \right) (\tilde{\gamma}_3 + i\tilde{\gamma}_4). \quad (4.9)$$

Using these expressions and the form for the γ matrices from eq. (2.5), we can compute the spin connection terms appearing in the Dirac equation:

$$\frac{1}{8} \tilde{\gamma}^m \omega_m^{\alpha\beta} [\tilde{\gamma}^\alpha, \tilde{\gamma}^\beta] = \frac{1}{2} \begin{pmatrix} 0 & 0 & \frac{i\bar{z}}{R_1} & -\frac{w}{R_2} \\ 0 & 0 & -\frac{\bar{w}}{R_2} & \frac{iz}{R_1} \\ -\frac{iz}{R_1} & -\frac{w}{R_2} & 0 & 0 \\ -\frac{\bar{w}}{R_2} & -\frac{i\bar{z}}{R_1} & 0 & 0 \end{pmatrix}. \quad (4.10)$$

The kinetic term is $\tilde{\gamma}^m \partial_m$, which evaluates to

$$\tilde{\gamma}^m \partial_m = \begin{pmatrix} 0 & 0 & -\frac{(1+z\bar{z})}{R_1} i \partial_z & \frac{(1+w\bar{w})}{R_2} \partial_{\bar{w}} \\ 0 & 0 & \frac{(1+w\bar{w})}{R_2} \partial_w & -\frac{(1+z\bar{z})}{R_1} i \partial_{\bar{z}} \\ i \frac{(1+z\bar{z})}{R_1} \partial_{\bar{z}} & \frac{(1+w\bar{w})}{R_2} \partial_{\bar{w}} & 0 & 0 \\ \frac{(1+w\bar{w})}{R_2} \partial_w & i \frac{(1+z\bar{z})}{R_1} \partial_z & 0 & 0 \end{pmatrix}. \quad (4.11)$$

Prior to including any effects of magnetic flux, we have

$$\tilde{\gamma}^m \partial_m + \frac{1}{8} \tilde{\gamma}^m \omega_m^{\alpha\beta} [\tilde{\gamma}^\alpha, \tilde{\gamma}^\beta] = \begin{pmatrix} 0 & 0 & \frac{i}{R_1} \left(-(1+z\bar{z}) \partial_z + \frac{\bar{z}}{2} \right) & \frac{1}{R_2} \left((1+w\bar{w}) \partial_{\bar{w}} - \frac{w}{2} \right) \\ 0 & 0 & \frac{1}{R_2} \left((1+w\bar{w}) \partial_w - \frac{\bar{w}}{2} \right) & \frac{i}{R_1} \left(-(1+z\bar{z}) \partial_{\bar{z}} + \frac{z}{2} \right) \\ \frac{i}{R_1} \left((1+z\bar{z}) \partial_{\bar{z}} - \frac{\bar{z}}{2} \right) & \frac{1}{R_2} \left((1+w\bar{w}) \partial_{\bar{w}} - \frac{w}{2} \right) & 0 & 0 \\ \frac{1}{R_2} \left((1+w\bar{w}) \partial_w - \frac{\bar{w}}{2} \right) & \frac{i}{R_1} \left((1+z\bar{z}) \partial_z - \frac{z}{2} \right) & 0 & 0 \end{pmatrix}$$

To obtain chiral fermions, we also require a gauge field background on $\mathbb{P}^1 \times \mathbb{P}^1$. We place a Dirac monopole background on each \mathbb{P}^1 , with M units of flux on the first \mathbb{P}^1 and N units of flux on the second \mathbb{P}^1 . The resulting gauge field is

$$A = \frac{iM\bar{z}}{2(1+z\bar{z})} dz - \frac{iMz}{2(1+z\bar{z})} d\bar{z} + \frac{iN\bar{w}}{2(1+w\bar{w})} dw - \frac{iNw}{2(1+w\bar{w})} d\bar{w},$$

with

$$F = \frac{-iM}{(1+z\bar{z})^2} dz \wedge d\bar{z} - \frac{iN}{(1+w\bar{w})^2} dw \wedge d\bar{w}, \quad (4.12)$$

and

$$\int_{\mathbb{P}^1(z)} F = -2\pi M, \quad \int_{\mathbb{P}^1(w)} F = -2\pi N.$$

We can then evaluate

$$-i\tilde{\gamma}^m A_m = \frac{1}{2} \begin{pmatrix} 0 & 0 & -\frac{iM\bar{z}}{R_1} & -\frac{Nw}{R_2} \\ 0 & 0 & \frac{N\bar{w}}{R_2} & \frac{iMz}{R_1} \\ -\frac{iMz}{R_1} & -\frac{Nw}{R_2} & 0 & 0 \\ \frac{N\bar{w}}{R_2} & \frac{iM\bar{z}}{R_1} & 0 & 0 \end{pmatrix}. \quad (4.13)$$

We can now write down the Dirac operator on $\mathbb{P}^1 \times \mathbb{P}^1$. This is

$$\tilde{\gamma}^m D_m = \tilde{\gamma}^m (\partial_m + \frac{1}{8} \omega_\mu^{\alpha\beta} [\tilde{\gamma}^\alpha, \tilde{\gamma}^\beta] - iA_\mu) = \begin{pmatrix} 0 & \mathcal{D}_+ \\ \mathcal{D}_- & 0 \end{pmatrix},$$

where

$$\begin{aligned} \mathcal{D}_+ &= \begin{pmatrix} \frac{i}{R_1} \left(-(1+z\bar{z})\partial_z + \frac{(1-M)}{2}\bar{z} \right) & \frac{1}{R_2} \left((1+w\bar{w})\partial_{\bar{w}} - \frac{(N+1)}{2}w \right) \\ \frac{1}{R_2} \left((1+w\bar{w})\partial_w + \frac{(N-1)}{2}\bar{w} \right) & \frac{i}{R_1} \left(-(1+z\bar{z})\partial_{\bar{z}} + \frac{(M+1)}{2}z \right) \end{pmatrix}, \\ \mathcal{D}_- &= \begin{pmatrix} \frac{i}{R_1} \left((1+z\bar{z})\partial_{\bar{z}} - \frac{(M+1)}{2}z \right) & \frac{1}{R_2} \left((1+w\bar{w})\partial_{\bar{w}} - \frac{(N+1)}{2}w \right) \\ \frac{1}{R_2} \left((1+w\bar{w})\partial_w + \frac{(N-1)}{2}\bar{w} \right) & \frac{i}{R_1} \left((1+z\bar{z})\partial_z + \frac{(M-1)}{2}\bar{z} \right) \end{pmatrix}. \end{aligned} \quad (4.14)$$

We write the fermions as a column vector, $\psi = \left(\psi_1 \ \psi_2 \ \psi_3 \ \psi_4 \right)^T$ and look for zero modes of the Dirac equation. It is easy to verify that, prior to imposing normalisability, zero mode solutions of the Dirac equation take the following form:

$$\psi = \begin{pmatrix} (1+w\bar{w})^{\frac{1-N}{2}} (1+z\bar{z})^{\frac{1+M}{2}} f(\bar{w}, z) \\ (1+w\bar{w})^{\frac{1+N}{2}} (1+z\bar{z})^{\frac{1-M}{2}} f(w, \bar{z}) \\ (1+w\bar{w})^{\frac{1-N}{2}} (1+z\bar{z})^{\frac{1-M}{2}} f(\bar{w}, \bar{z}) \\ (1+w\bar{w})^{\frac{1+N}{2}} (1+z\bar{z})^{\frac{1+M}{2}} f(w, z) \end{pmatrix}, \quad (4.15)$$

where f are holomorphic polynomials.

4.1.1 Twisting of fermionic modes

To compute the wavefunctions for fermions living on D-brane worldvolumes, it is necessary to twist the Dirac equation to account for the fact that the cycle lives in a curved space and has a nontrivial normal bundle [26, 12]. As a Kähler manifold, the holonomy group of the surface is $U(2)$, broken to $U(1) \times U(1)$ by the direct product metric of $\mathbb{P}^1 \times \mathbb{P}^1$. This $U(2)$ can be written as $SU(2) \times U(1)_J$, where the $U(1)_J$ corresponds to the central $U(1)$ of the tangent bundle. In preparation for the description of the twisting procedure, it is

helpful to see how the central $U(1)$ acts on the four spinor modes ψ_i . The action of $U(1)_J$ on tangent vectors is

$$\begin{pmatrix} z \\ w \end{pmatrix} \rightarrow \begin{pmatrix} e^{i\theta} & 0 \\ 0 & e^{i\theta} \end{pmatrix} \begin{pmatrix} z \\ w \end{pmatrix}. \quad (4.16)$$

The action on spinors is given by $\tilde{\Lambda} = \frac{1}{4}\Lambda_{\alpha\beta}[\gamma^\alpha, \gamma^\beta]$. Here $\Lambda^z_z = i\theta, \Lambda^w_w = i\theta$ for infinitesimal transformations. Using the expressions (4.9) for $\gamma^z, \gamma^{\bar{z}}$, we obtain

$$\tilde{\Lambda} = -\frac{\theta}{4}([\gamma_2, \gamma_1] + [\gamma_4, \gamma_3]) \quad (4.17)$$

$$= \begin{pmatrix} 0 & 0 & 0 & 0 \\ 0 & 0 & 0 & 0 \\ 0 & 0 & i\theta & 0 \\ 0 & 0 & 0 & -i\theta \end{pmatrix} \quad (4.18)$$

From (4.18) it is clear that under $U(1)_J$ ψ_1 and ψ_2 have charge 0, while ψ_3 and ψ_4 have charges ± 1 respectively. Identifying $SU(2)_L$ with the $SU(2)$ of the $U(2)$ holonomy group, we can then regard (ψ_1, ψ_2) and (ψ_3, ψ_4) as being in the $(\mathbf{2}, \mathbf{1})$ and $(\mathbf{1}, \mathbf{2})$ representations of $SO(4) = SU(2)_L \times SU(2)_R$. As discussed in section 2, on dimensional reduction all the spinor modes correspond to left-handed spinors in 4-dimensions. The fact that we start with a positive chirality spinor in ten dimensions implies that the representation content is

$$[(\mathbf{2}, \mathbf{1}) \otimes (\mathbf{2}, \mathbf{1})]_{+1/2} \oplus [(\mathbf{2}, \mathbf{1}) \otimes (\mathbf{1}, \mathbf{2})]_{-1/2},$$

where the last number designates the R-charge of the mode under the $U(1)$ transverse to the brane world volume. (ψ_1, ψ_2) and (ψ_3, ψ_4) therefore have R-charges of $\pm 1/2$ respectively.

The twisting corresponds to a replacement of the central $U(1)$ generator J by $J \pm 2R$, where the choice of the sign is arbitrary. As the magnetic flux corresponds to a Dirac monopole and has the same structure as the Kähler form, this twist corresponds to $(M, N) \rightarrow (M, N) \pm (1, 1)$ in the Dirac equation. The choice of the sign is arbitrary and for convenience we will take $(M, N) \rightarrow (M, N) + (1, 1)$ for (ψ_1, ψ_2) and $(M, N) \rightarrow (M, N) - (1, 1)$ for (ψ_3, ψ_4) . The different signs for (ψ_1, ψ_2) and (ψ_3, ψ_4) correspond to the different R-charges of these fields. After this twisting, the fermionic zero-mode wavefunctions of (4.15) become, prior to imposing normalisability,

$$\psi = \begin{pmatrix} \psi_1 \\ \psi_2 \\ \psi_3 \\ \psi_4 \end{pmatrix} = \begin{pmatrix} (1 + w\bar{w})^{-\frac{N}{2}}(1 + z\bar{z})^{1+\frac{M}{2}} f(\bar{w}, z) \\ (1 + w\bar{w})^{1+\frac{N}{2}}(1 + z\bar{z})^{-\frac{M}{2}} f(w, \bar{z}) \\ (1 + w\bar{w})^{1-\frac{N}{2}}(1 + z\bar{z})^{1-\frac{M}{2}} f(\bar{w}, \bar{z}) \\ (1 + w\bar{w})^{\frac{N}{2}}(1 + z\bar{z})^{\frac{M}{2}} f(w, z) \end{pmatrix}. \quad (4.19)$$

Requiring the wavefunctions to be well-defined at the origin implies that f can only contain positive powers of z and w . As for the \mathbb{P}^1 case of section 3, the allowed degree of the polynomial is determined by the flux integers M and N and the requirement that the wavefunction be square integrable.

The counting of normalisable modes of the Dirac equation follows straightforwardly. The number of zero modes of each type are

Field	Number of zero modes	Conditions on M and N
ψ_1 :	$(M - 1)(N + 1)$,	$M \leq -2, N \geq 0$.
ψ_2 :	$(M + 1)(N - 1)$,	$M \geq 0, N \leq -2$.
ψ_3 :	$(M - 1)(N - 1)$,	$M \geq 2, N \geq 2$.
ψ_4 :	$(M + 1) N + 1$,	$M \leq 0, N \leq 0$.

(4.20)

We note that when $M = N = 0$, eq. (4.19) gives one constant zero mode, which represents the gaugino of dimensionally reduced super Yang-Mills.

4.1.2 Counting zero modes

The number and form of the zero modes on dimensional reduction is in principle contained in eq. (4.19). However we need to recall that when we reduce fluxed super $U(P + Q)$ Yang-Mills, 4-dimensional fermions start off valued in the adjoint,

$$\psi_{8d} = \begin{pmatrix} W & X \\ Y & Z \end{pmatrix} = \begin{pmatrix} (\text{Adj}(\mathbf{P}), \mathbf{1}) & (\mathbf{P}, \bar{\mathbf{Q}}) \\ (\bar{\mathbf{P}}, \mathbf{Q}) & (\mathbf{1}, \text{Adj}(\mathbf{Q})) \end{pmatrix}, \quad (4.21)$$

where we have written the representations of the various modes. When we turn on magnetic flux along the diagonal $U(1)$ in the W sector and break the gauge group from $U(P + Q)$ to $U(P) \times U(Q)$, chiral bifundamental fermions can appear in the X and Y sectors. Fermions in the X and Y sectors are sensitive to the difference in magnetic flux between the W and Z sectors. Fermions in the W and Z sectors do not feel any net magnetic flux and only generate the adjoint zero mode that is the SYM gaugino.

We suppose that the net amount of magnetic flux in the W sector is (M, N) . From section 2, the charge felt by the bifundamental fermions comes from the $[A, \lambda]$ term and therefore is $(+M, +N)$ for the X modes and $(-M, -N)$ for the Y modes. The chiral spectrum consists of $\mathcal{N}_{(M, N)}$ modes in the $(\mathbf{P}, \bar{\mathbf{Q}})$ representation from the X sector, and $\mathcal{N}_{(-M, -N)}$ modes in the $(\bar{\mathbf{P}}, \mathbf{Q})$ representation from the Y sector. The net number of chiral zero modes is the difference $\mathcal{N}_{(M, N)} - \mathcal{N}_{(-M, -N)}$.

A case of particular interest is when M and N have opposite signs, as we shall see below that this is the case corresponding to supersymmetric brane configurations. For definiteness we take $M > 0, N < 0$. From equation (4.19), we see that for this case ψ_3 and ψ_4 can never have zero modes, whereas ψ_1 and ψ_2 can have zero modes. We can also see that

$$\mathcal{N}_{(M, N)} = (|M| + 1)(|N| - 1), \quad \mathcal{N}_{(-M, -N)} = (|M| - 1)(|N| + 1). \quad (4.22)$$

and so

$$\mathcal{N}_{(M, N)} - \mathcal{N}_{(-M, -N)} = 2(|N| - |M|). \quad (4.23)$$

For the particular case that $M = -N$, there are no net chiral zero modes, although vector-like pairs do exist.

When M and N have opposite signs we see that all zero modes are either ψ_1 or ψ_2 in form. As chiral superfields, this means they are members of multiplets descending from A_M and there are no fields that descend from the transverse scalar multiplets. As discussed in section 2, this means that all Yukawa couplings will vanish due to the gamma-matrix structure of $\psi^\dagger \gamma^M \psi$.

When M and N have the same sign it becomes possible to find zero modes from both the (ψ_1, ψ_2) sector and the (ψ_3, ψ_4) sector. In this case $\psi^\dagger \gamma^M \psi$ does not necessarily vanish and the trilinear Yukawa coupling can be non-zero. However in this case the D-terms are non-vanishing and the brane configuration is not supersymmetric.

4.2 Scalars on $\mathbb{P}^1 \times \mathbb{P}^1$

The scalar modes on $\mathbb{P}^1 \times \mathbb{P}^1$ are determined by the eigenmodes of

$$-g^{mn} D_m D_n \phi = \left[- (g^{z\bar{z}} D_z D_{\bar{z}} + g^{\bar{z}z} D_{\bar{z}} D_z) - (g^{w\bar{w}} D_w D_{\bar{w}} + g^{\bar{w}w} D_{\bar{w}} D_w) \right] \phi \quad (4.24)$$

The product nature of the geometry implies that scalar wavefunctions on $\mathbb{P}^1 \times \mathbb{P}^1$ factorise as the product of two scalar wavefunctions on the individual \mathbb{P}^1 s,

$$\phi(z, \bar{z}, w, \bar{w}) = \phi_M(z, \bar{z}) \phi_N(w, \bar{w}). \quad (4.25)$$

As for the \mathbb{P}^1 case we can write

$$\begin{aligned} - (g^{z\bar{z}} D_z D_{\bar{z}} + g^{\bar{z}z} D_{\bar{z}} D_z) \phi_M &= -2g^{z\bar{z}} D_z D_{\bar{z}} \phi_M + \frac{M}{2R_1^2} \phi_M, \\ - (g^{w\bar{w}} D_w D_{\bar{w}} + g^{\bar{w}w} D_{\bar{w}} D_w) \phi_N &= -2g^{w\bar{w}} D_w D_{\bar{w}} \phi_N + \frac{N}{2R_2^2} \phi_N. \end{aligned} \quad (4.26)$$

The spectrum is a direct product of that for \mathbb{P}^1 : the lowest lying modes have mass

$$m^2 = \frac{|M|}{2R_1^2} + \frac{|N|}{2R_2^2}, \quad (4.27)$$

and have degeneracy $(|M| + 1)(|N| + 1)$.

As for the \mathbb{P}^1 case the form of the solutions are

$$\begin{aligned} M > 0 : \quad \phi_M(z, \bar{z}) &= \frac{f_M(\bar{z})}{(1 + z\bar{z})^{|M|/2}}, \\ M = 0 : \quad \phi_M(z, \bar{z}) &= \phi_0, \\ M < 0 : \quad \phi_M(z, \bar{z}) &= \frac{f_M(z)}{(1 + z\bar{z})^{|M|/2}}. \end{aligned} \quad (4.28)$$

where f_M is a holomorphic polynomial of degree M . The functions $\phi_N(w, \bar{w})$ have an identical behaviour depending on the values of N .

Twisting of scalars

The fact that the brane is embedded in a nontrivial background also implies that the scalar equation of motion should be twisted. From the extra dimensional point of view there are

two scalar degrees of freedom. One of these corresponds to $A_\mu \otimes 1$, which is a vectorlike degree of freedom in 4 dimensions. The other corresponds to the transverse scalar ϕ that parametrises normal motion of the brane. In the former case, the degree of freedom is internal (as with A_M) and so the equation of motion is not twisted. In the compact space this degree of freedom therefore satisfies the scalar equation (4.24), with M and N directly given by the flux quantum numbers. This degree of freedom partners the ψ_4 fermionic degree of freedom.

This does not hold for the transverse scalar. This is valued in the normal bundle, which for $\mathbb{P}^1 \times \mathbb{P}^1$ is $\mathcal{O}_{\mathbb{P}^1 \times \mathbb{P}^1}(-2, -2)$. The effective values of M and N for the transverse scalar equation are twisted by two units of flux. The sign of the twist is determined by our knowledge that there are no holomorphic sections of the normal bundle. Denoting $\Phi = \phi_8 + i\phi_9$, this implies that in the absence of flux there can be no normalisable solutions of $D_{\bar{z}}\Phi = D_{\bar{w}}\Phi = 0$, and consequently there are no massless scalars in the absence of flux.

The covariant derivatives are

$$\begin{aligned} D_z\phi &= \left(\partial_z + \frac{(M-2)\bar{z}}{2(1+z\bar{z})} \right) \phi, & D_{\bar{z}}\phi &= \left(\partial_{\bar{z}} - \frac{(M-2)z}{2(1+z\bar{z})} \right) \phi, \\ D_w\phi &= \left(\partial_w + \frac{(N-2)\bar{w}}{2(1+w\bar{w})} \right) \phi, & D_{\bar{w}}\phi &= \left(\partial_{\bar{w}} - \frac{(N-2)w}{2(1+w\bar{w})} \right) \phi. \end{aligned} \quad (4.29)$$

When $M, N \geq 2$ holomorphic sections of the bundle exist and ‘zero modes’ occur. However, as for $M, N \geq 2$ the spectrum is non-supersymmetric these modes will not be massless but will generically be tachyonic. To compute the masses of these twisted scalars will involve the addition of a curvature contribution to the naive mass eigenvalue, due to the fact that these scalar are valued in a nontrivial bundle over $\mathbb{P}^1 \times \mathbb{P}^1$. These modes partner the ψ_3 fermionic mode, for which zero modes exist only when M and N have the same sign.

4.3 Vectors on $\mathbb{P}^1 \times \mathbb{P}^1$

The study of vectors on $\mathbb{P}^1 \times \mathbb{P}^1$ clearly parallels that on \mathbb{P}^1 , but there are some subtle issues that arise. The vector equation follows from the general analysis,

$$\tilde{D}_i \tilde{D}^i \Phi_{j,ab} + 2i \langle G \rangle^{ab,i} \Phi_{i,ab} - [\nabla^i, \nabla_j] \Phi_{i,ab} = -m^2 \Phi_{i,ab}. \quad (4.30)$$

We will assume $a > b$ for definiteness. The fluxes are

$$\begin{aligned} G_z^{z\ ab} &= -G_{\bar{z}}^{\bar{z}\ ab} = \frac{iM}{2R_1^2}, \\ G_w^{w\ ab} &= -G_{\bar{w}}^{\bar{w}\ ab} = \frac{iN}{2R_2^2}. \end{aligned} \quad (4.31)$$

The gauge-fixing condition that we impose is

$$\tilde{D}_i \Phi^{i,ab} = g^{z\bar{z}} (\tilde{D}_z \Phi_{\bar{z}}^{ab} + \tilde{D}_{\bar{z}} \Phi_z^{ab}) + g^{w\bar{w}} (\tilde{D}_w \Phi_{\bar{w}}^{ab} + \tilde{D}_{\bar{w}} \Phi_w^{ab}) = 0.$$

As for the \mathbb{P}^1 case, we will seek solutions for which $\tilde{D}_{\bar{z}} \Phi_z^{ab} = 0$, with $\Phi_{\bar{z}}^{ab} = 0$. Separate solutions will occur for Φ_i^{ab} oriented along the z or w directions. As for the \mathbb{P}^1 case, the

latter terms of equation (4.30) can be simplified to give

$$\begin{aligned}
 2i\langle G \rangle^{ab,z} \Phi_{z,ab} - [\nabla^z, \nabla_{\bar{z}}] \Phi_{z,ab} &= (-M-1) \frac{\Phi_{z,ab}}{R_1^2}, \\
 2i\langle G \rangle^{ab,\bar{z}} \Phi_{\bar{z},ab} - [\nabla^z, \nabla_{\bar{z}}] \Phi_{\bar{z},ab} &= (M-1) \frac{\Phi_{\bar{z},ab}}{R_1^2}, \\
 2i\langle G \rangle^{ab,w} \Phi_{w,ab} - [\nabla^w, \nabla_{\bar{w}}] \Phi_{w,ab} &= (-N-1) \frac{\Phi_{w,ab}}{R_2^2}, \\
 2i\langle G \rangle^{ab,\bar{w}} \Phi_{\bar{w},ab} - [\nabla^w, \nabla_{\bar{w}}] \Phi_{\bar{w},ab} &= (N-1) \frac{\Phi_{\bar{w},ab}}{R_2^2}.
 \end{aligned} \tag{4.32}$$

The Laplacian operator can also be simplified in analogy with equation (3.23), to give

$$\begin{aligned}
 \tilde{D}_i \tilde{D}^i \Phi_z^{ab} &= \left(g^{z\bar{z}} \tilde{D}_z^s \tilde{D}_{\bar{z}}^s + g^{w\bar{w}} \tilde{D}_w^s \tilde{D}_{\bar{w}}^s \right) \Phi_z^{ab} + \left(\frac{M+2}{2R_1^2} + \frac{N}{2R_2^2} \right) \Phi_{z,ab}, \\
 \tilde{D}_i \tilde{D}^i \Phi_{\bar{z}}^{ab} &= \left(g^{z\bar{z}} \tilde{D}_{\bar{z}}^s \tilde{D}_z^s + g^{w\bar{w}} \tilde{D}_w^s \tilde{D}_{\bar{w}}^s \right) \Phi_{\bar{z}}^{ab} + \left(\frac{-M+2}{2R_1^2} + \frac{N}{2R_2^2} \right) \Phi_{\bar{z},ab}, \\
 \tilde{D}_i \tilde{D}^i \Phi_w^{ab} &= \left(g^{z\bar{z}} \tilde{D}_z^s \tilde{D}_{\bar{z}}^s + g^{w\bar{w}} \tilde{D}_w^s \tilde{D}_{\bar{w}}^s \right) \Phi_w^{ab} + \left(\frac{M}{2R_1^2} + \frac{N+2}{2R_2^2} \right) \Phi_{w,ab}, \\
 \tilde{D}_i \tilde{D}^i \Phi_{\bar{w}}^{ab} &= \left(g^{z\bar{z}} \tilde{D}_z^s \tilde{D}_{\bar{z}}^s + g^{w\bar{w}} \tilde{D}_w^s \tilde{D}_{\bar{w}}^s \right) \Phi_{\bar{w}}^{ab} + \left(\frac{M}{2R_1^2} - \frac{N+2}{2R_2^2} \right) \Phi_{\bar{w},ab}.
 \end{aligned} \tag{4.33}$$

The mass equations can then be written as, in analogue with equations (3.25) and (3.26),

$$\begin{aligned}
 -m^2 \Phi_z^{ab} &= \left(g^{z\bar{z}} \tilde{D}_z^s \tilde{D}_{\bar{z}}^s + g^{w\bar{w}} \tilde{D}_w^s \tilde{D}_{\bar{w}}^s \right) \Phi_z^{ab} + \left(\frac{-M}{2R_1^2} + \frac{N}{2R_2^2} \right) \Phi_{z,ab}, \\
 -m^2 \Phi_{\bar{z}}^{ab} &= \left(g^{z\bar{z}} \tilde{D}_{\bar{z}}^s \tilde{D}_z^s + g^{w\bar{w}} \tilde{D}_w^s \tilde{D}_{\bar{w}}^s \right) \Phi_{\bar{z}}^{ab} + \left(\frac{M}{2R_1^2} + \frac{N}{2R_2^2} \right) \Phi_{\bar{z},ab}, \\
 -m^2 \Phi_w^{ab} &= \left(g^{z\bar{z}} \tilde{D}_z^s \tilde{D}_{\bar{z}}^s + g^{w\bar{w}} \tilde{D}_w^s \tilde{D}_{\bar{w}}^s \right) \Phi_w^{ab} + \left(\frac{M}{2R_1^2} + \frac{-N}{2R_2^2} \right) \Phi_{w,ab}, \\
 -m^2 \Phi_{\bar{w}}^{ab} &= \left(g^{z\bar{z}} \tilde{D}_z^s \tilde{D}_{\bar{z}}^s + g^{w\bar{w}} \tilde{D}_w^s \tilde{D}_{\bar{w}}^s \right) \Phi_{\bar{w}}^{ab} + \left(\frac{M}{2R_1^2} + \frac{N}{2R_2^2} \right) \Phi_{\bar{w},ab}.
 \end{aligned} \tag{4.34}$$

An excitation Φ_z^{ab} is the product of a vector excitation in the z plane and a scalar excitation in the w plane. For a Φ_z excitation, the \tilde{D}_w^s and $\tilde{D}_{\bar{w}}^s$ terms can be exchanged with an $N \rightarrow -N$ shift in the above equations.

For $M, N > 0$, the lowest lying modes are obtained by solving $D_z^s \Phi_{\bar{z}}^{ab} = D_w^s \Phi_{\bar{z}}^{ab} = 0$, and likewise $D_z^s \Phi_w^{ab} = D_w^s \Phi_w^{ab} = 0$. The resulting modes can be written as

$$\begin{aligned}
 \Phi_{\bar{z}}^{ab} &= (1+z\bar{z})^{-|M|/2} (1+w\bar{w})^{-|N|/2} A_{\bar{z},M}(\bar{z}) \phi_N(\bar{w}), \quad \text{with mass } m^2 = \left(\frac{|N|}{2R_2^2} - \frac{|M|}{2R_1^2} \right), \\
 \Phi_w^{ab} &= (1+z\bar{z})^{-|M|/2} (1+w\bar{w})^{-|N|/2} \phi_M(z) A_{w,N}(w), \quad \text{with mass } m^2 = \left(\frac{|M|}{2R_1^2} - \frac{|N|}{2R_2^2} \right).
 \end{aligned}$$

Here both A_M and ϕ_N are (anti)holomorphic functions of the appropriate variables.

For $M > 0, N < 0$, the zero modes are obtained by solving $D_{\bar{w}}^s \Phi_{\bar{z}}^{ab} = D_z^s \Phi_{\bar{z}}^{ab} = 0$, and likewise $D_z^s \Phi_w^{ab} = D_{\bar{w}}^s \Phi_w^{ab} = 0$. The resulting modes can be written as

$$\begin{aligned} \Phi_{\bar{z}}^{ab} &= (1 + z\bar{z})^{-|M|/2} (1 + w\bar{w})^{-|N|/2} A_{\bar{z},M}(\bar{z}) \phi_N(w), & \text{with mass } m^2 &= \left(\frac{|N|}{2R_2^2} - \frac{|M|}{2R_1^2} \right), \\ \Phi_w^{ab} &= (1 + z\bar{z})^{-|M|/2} (1 + w\bar{w})^{-|N|/2} \phi_M(\bar{z}) A_{w,N}(w), & \text{with mass } m^2 &= \left(\frac{|M|}{2R_1^2} - \frac{|N|}{2R_2^2} \right), \end{aligned}$$

where A and ϕ are (anti)holomorphic functions. Similar expressions are obtained for the $M < 0, N > 0$ and $M, N < 0$ cases.

The normalisation condition is that

$$\int \sqrt{g} g^{ij} \Phi_i^{ab} \Phi_j^{ba}$$

is finite. In a mode such as $\Phi_{\bar{z}}^{ab} = A_{\bar{z},M}(\bar{z}) \phi_N(\bar{w}) (M, N > 0)$, this implies that $A_{\bar{z},M}(\bar{z})$ satisfies vector normalisability on the first \mathbb{P}^1 , whereas $\phi_N(\bar{w})$ only need satisfy scalar normalisability. The degeneracy is then given by $(|M| - 1)(|N| + 1)$, with a requirement that $M \geq 2$ for any normalisable zero modes to exist at all.

In general, the degeneracy of the Φ_z^{ab} (or $\Phi_{\bar{z}}^{ab}$) modes are given by $(|M| - 1)(|N| + 1)$, with a requirement of $|M| \geq 2$ for any normalisable modes to exist, while the degeneracy of Φ_w^{ab} (or $\Phi_{\bar{w}}^{ab}$) modes is given by $(|M| + 1)(|N| - 1)$, with a requirement of $|N| \geq 2$ for any normalisable modes to exist.

The most interesting case for our purposes is the case $M > 0, N < 0$ as this corresponds to a case where a supersymmetric spectrum can be realised. The relative sizes of the two \mathbb{P}^1 s will adjust to eliminate tachyons⁵ from the spectrum, generating genuinely massless modes in the spectrum. The relative sizes will be such that $R_2^2/R_1^2 = |N/M|$.

In this case there are $(|M| + 1)(|N| - 1)$ modes in the $(\mathbf{P}, \bar{\mathbf{Q}})$ representation and $(|M| - 1)(|N| + 1)$ in the $(\bar{\mathbf{P}}, \mathbf{Q})$ representation. The net number of chiral modes is

$$\mathcal{N}_{(\mathbf{P}, \bar{\mathbf{Q}})} - \mathcal{N}_{(\bar{\mathbf{P}}, \mathbf{Q})} = (|M| + 1)(|N| - 1) - (|M| - 1)(|N| + 1) = 2(|N| - |M|).$$

This coincides precisely with equation (4.23) and the topological index (see eq (3.51) of [12])

$$I = \int_S c_1(F) c_1(S). \tag{4.35}$$

Defining e_i by $\int_{\mathbb{P}^1} e_i = 1$, we have $c_1(S) = 2(e_1 + e_2)$ (recall $c_1(\mathbb{P}^n) = (n + 1)e_1$) and $c_1(F) = |M|e_1 - |N|e_2$, which gives

$$I = 2(|M| - |N|). \tag{4.36}$$

Note that it is only when $MN < 0$ that we can perform a direct comparison of the topological index with the counting of zero modes from A_M alone - when $MN \geq 0$ we should include the scalar and A_μ sector as well in order to compare with the index. However $MN < 0$ is the only case that is relevant for supersymmetry.

⁵When present, the tachyons correspond to a Nielsen and Olesen instability [27] of the flux.

We note that the structure of the vector zero mode wavefunctions is the same as that for the fermion zero mode wavefunctions. The apparent difference - single powers of $(1 + z\bar{z})$ or $(1 + w\bar{w})$ - goes away once one includes the $g^{z\bar{z}}$ necessary to compare $g^{z\bar{z}}\Phi_z\Phi_{\bar{z}}$ and $\psi^\dagger\psi$. The fact that the wavefunctions take the same form is of course necessary for supersymmetry.

4.4 Supersymmetry

For the brane embedding to be supersymmetric requires both F- and D-terms to vanish. The F-term conditions are associated to holomorphy, and require that the brane wrap a complex cycle with a holomorphic vector bundle. The D-terms involve non-holomorphic conditions and depend on the locus in moduli space, thereby imposing constraints on the Kähler moduli. As the D-term conditions are not holomorphic in nature, they receive quantum corrections that will also become important at small values of the moduli.

In the geometric regime (all cycle sizes much larger than the string scale), the D-term condition is that $F \wedge J = 0$, where F is the relative flux between the two wrapped branes. For the $\mathbb{P}^1 \times \mathbb{P}^1$ case, we write $F = Me_1 + Ne_2$ and $J = R_1^2 e_1 + R_2^2 e_2$. In this case the D-term condition gives

$$\frac{M}{N} = -\frac{R_1^2}{R_2^2}. \tag{4.37}$$

Eq. (4.37) can only be satisfied if M and N have opposite signs, and in this case the ratio $\frac{R_1}{R_2}$ is also fixed. This case is the one that we have considered in most detail above, where we saw that in the supersymmetric limit the vector and fermionic wavefunctions match precisely in terms of both number and representation.

However we also considered above cases where M and N have the same sign. This was motivated by the need to obtain non-vanishing Yukawas, but a second reason for this is our knowledge that the D-term equation will get quantum corrections, particularly at small volumes. The supersymmetry requirement $\text{sign}(M) = -\text{sign}(N)$ that held deep in the geometric regime may no longer hold in the small volume regime, and it may be possible for the case $\text{sign}(M) = \text{sign}(N)$ to be compatible with supersymmetry, particularly if we also allow for the possibility that the D-term is cancelled by a matter field vev rather than a vanishing Fayet-Iliopoulos term.

4.5 Normalisation and overlap integrals

The normalisation conditions for zero modes wavefunctions on $\mathbb{P}^1 \times \mathbb{P}^1$ follow straightforwardly from those on \mathbb{P}^1 . The generic wavefunction takes the form

$$\psi_{M_1, M_2}^{K_1, K_2}(z, w) = \frac{1}{\mathcal{N}_{M_1, M_2}^{K_1, K_2}} \frac{z^{K_1}}{(1 + z\bar{z})^{\frac{M_1-1}{2}}} \frac{w^{K_2}}{(1 + w\bar{w})^{\frac{M_2-1}{2}}}. \tag{4.38}$$

From the requirement that $\int \sqrt{g}\psi^\dagger\psi = 1$ it follows straightforwardly that

$$\begin{aligned} \left| \mathcal{N}_{M_1, M_2}^{K_1, K_2} \right|^2 &= \left| \mathcal{N}_{M_1}^{K_1} \right|^2 \left| \mathcal{N}_{M_2}^{K_2} \right|^2 = 16\pi^2 R_1^2 R_2^2 \frac{\Gamma(K_1 + 1)\Gamma(M_1 - K_1)\Gamma(K_2 + 1)\Gamma(M_2 - K_2)}{\Gamma(M_1 + 1)\Gamma(M_2 + 1)} \\ &= 64\pi^2 R_1^2 R_2^2 I_{M_1}^{K_1} I_{M_2}^{K_2}. \end{aligned} \tag{4.39}$$

where I_M^K was defined in eq. (3.29).

Similar to \mathbb{P}^1 , the triple overlap integrals take the form:

$$Y_{M_1 N_1 P_1, M_2 N_2 P_2}^{K_1 L_1, K_2 L_2} = \left[\frac{64\pi^2 R_1^2 R_2^2}{\mathcal{N}_{M_1, M_2}^{K_1, K_2} \mathcal{N}_{N_1, N_2}^{L_1, L_2} \mathcal{N}_{P_1, P_2}^{K_1+L_1, K_2+L_2}} \right] I_{\frac{M_1+N_1+P_1-1}{2}}^{K_1+L_1} I_{\frac{M_2+N_2+P_2-1}{2}}^{K_2+L_2}. \quad (4.40)$$

As for $\text{SO}(3)$ in the \mathbb{P}^1 case, in the $\mathbb{P}^1 \times \mathbb{P}^1$ case the zero modes fall into representations of $\text{SO}(3) \times \text{SO}(3)$. The degeneracies of the zero modes and the structure of the Yukawa couplings are determined by this global flavour symmetry. Once the $\mathbb{P}^1 \times \mathbb{P}^1$ is embedded in a compact Calabi-Yau, the local isometries will be lifted and the flavour symmetry will become approximate, as discussed at greater detail in [28].

5. Compactification on \mathbb{P}^2

We finally consider branes wrapped on $\mathbb{P}^2 \equiv dP^0$. As $c(\mathbb{P}^2) = (1 + e)^3$, where e is the fundamental class, $c_1(\mathbb{P}^2) = 3e$ and from the adjunction formula it follows that for \mathbb{P}^2 embedded in a Calabi-Yau the normal bundle is $\mathcal{O}_{\mathbb{P}^2}(-3)$. This geometry is interesting as the local geometry of the resolved $\mathbb{C}^3/\mathbb{Z}_3$ orbifold, which is the basis of some of the most attractive local realisations of the Standard Model [6]. The resolving 4-cycle is a \mathbb{P}^2 and the metric on the resolution has been computed in [29, 30]. The non-compact metric can be written as

$$g_{\mu\bar{\nu}} = \frac{(R^6 + \lambda^6)^{1/3}}{R^2} \delta_{\mu\bar{\nu}} - \frac{\lambda^6}{R^4(R^6 + \lambda^6)^{2/3}} w_\mu w_{\bar{\nu}}, \quad (5.1)$$

where $R^2 = \sum_{i=1}^3 w_i \bar{w}_i$ and λ is a scale parameter. As $R \rightarrow 0$ the metric has a coordinate singularity. Through a change of coordinates it can be seen that the space is however regular at $R = 0$, at which point there exists a minimal area \mathbb{P}^2 with the canonical Fubini-Study metric. The size of the \mathbb{P}^2 is set by the parameter λ , and our interest is in branes wrapped on this \mathbb{P}^2 .

In the non-compact limit the resolving \mathbb{P}^2 has the canonical Fubini-Study metric. Denoting coordinates by $z_1, z_2, \bar{z}_1, \bar{z}_2$, the Fubini-Study metric for \mathbb{P}^n comes from the Kähler potential

$$K = \frac{i}{2} \log \left(1 + \sum_{i=1}^n z_i \bar{z}_i \right) \equiv \frac{i}{2} \ln (1 + \rho^2), \quad (5.2)$$

where $\rho^2 = \sum_i z_i \bar{z}_i$. The metric is given by

$$g_{i\bar{j}} = \frac{1}{2} \left(\frac{\delta_{i\bar{j}}}{(1 + \rho^2)} - \frac{z_i \bar{z}_j}{(1 + \rho^2)^2} \right), \quad (5.3)$$

$$g^{i\bar{j}} = 2(1 + \rho^2) \left(\delta^{i\bar{j}} + z^i \bar{z}^{\bar{j}} \right). \quad (5.4)$$

We can write these out explicitly as

$$g = \frac{1}{2(1 + z_1 \bar{z}_1 + z_2 \bar{z}_2)^2} \begin{bmatrix} 0 & 0 & 1 + z_2 \bar{z}_2 & -\bar{z}_1 z_2 \\ 0 & 0 & -z_1 \bar{z}_2 & 1 + z_1 \bar{z}_1 \\ 1 + z_2 \bar{z}_2 & -z_1 \bar{z}_2 & 0 & 0 \\ -\bar{z}_1 z_2 & 1 + z_1 \bar{z}_1 & 0 & 0 \end{bmatrix},$$

$$g^{-1} = 2(1 + z_1 \bar{z}_1 + z_2 \bar{z}_2) \begin{bmatrix} 0 & 0 & 1 + z_1 \bar{z}_1 & z_1 \bar{z}_2 \\ 0 & 0 & \bar{z}_1 z_2 & 1 + z_2 \bar{z}_2 \\ 1 + z_1 \bar{z}_1 & \bar{z}_1 z_2 & 0 & 0 \\ z_1 \bar{z}_2 & 1 + z_2 \bar{z}_2 & 0 & 0 \end{bmatrix}. \quad (5.5)$$

The Kähler form is given by

$$J = ig_{i\bar{j}} dz^i \wedge d\bar{z}^{\bar{j}} = i \frac{dz^i \wedge d\bar{z}^{\bar{i}}}{2(1 + \rho^2)} - i \frac{\bar{z}^{\bar{i}} dz^i \wedge z^{\bar{j}} d\bar{z}^{\bar{j}}}{2(1 + \rho^2)^2}. \quad (5.6)$$

We note that we can write

$$J = \frac{i}{2(1 + \rho^2)^2} \left[(1 + z_2 \bar{z}_2) dz_1 \wedge d\bar{z}_1 - z_2 \bar{z}_1 dz_1 \wedge d\bar{z}_2 - z_1 \bar{z}_2 dz_2 \wedge d\bar{z}_1 + (1 + z_1 \bar{z}_1) dz_2 \wedge d\bar{z}_2 \right]$$

$$= d \left(\frac{1}{4i(1 + \rho^2)} [(\bar{z}_1 dz_1 + \bar{z}_2 dz_2) - (z_1 d\bar{z}_1 + z_2 d\bar{z}_2)] \right) = d \left(\frac{\rho e_2}{2} \right), \quad (5.7)$$

where the one-form e_2 will be subsequently used in eq. (5.18). This last equality is only valid away from the origin, in keeping with the fact that the Kähler form is not globally exact. Topologically \mathbb{P}^2 has a single 2-cycle, which we can take to be parametrised by $\{z_1 \in \mathbb{C}, z_2 = 0\}$. Using the parametrisation of the Kähler form from eq. (5.7) we can verify that $\int_{\mathbb{P}^1} J = \pi$.

5.1 Scalars on \mathbb{P}^2

We first study the lowest-lying eigenmodes of the scalar Laplacian on \mathbb{P}^2 . This is determined by the eigenfunctions of

$$-D_m D^m \phi = -g^{i\bar{j}} (D_i D_{\bar{j}} \phi + D_{\bar{j}} D_i \phi). \quad (5.8)$$

Acting on a scalar $[D_i, D_{\bar{j}}] \phi = -i F_{i\bar{j}} \phi$, and so

$$\begin{aligned} -D^a D_a \phi &= -2g^{i\bar{j}} D_i D_{\bar{j}} \phi - ig^{i\bar{j}} F_{i\bar{j}} \phi, \\ &= -2g^{i\bar{j}} D_{\bar{j}} D_i \phi + ig^{i\bar{j}} F_{i\bar{j}} \phi. \end{aligned} \quad (5.9)$$

We can evaluate $g^{i\bar{j}} F_{i\bar{j}} = 4iM$ to obtain

$$\begin{aligned} -D_a D^a \phi &= -2g^{i\bar{j}} D_i D_{\bar{j}} \phi + 4M \phi, \\ &= -2g^{i\bar{j}} D_{\bar{j}} D_i \phi - 4M \phi. \end{aligned} \quad (5.10)$$

As $-g^{i\bar{j}}D_i D_{\bar{j}}$ is a positive semi-definite operator the lowest eigenfunctions are obtained by solving $D_{\bar{i}}\phi = (\partial_{\bar{i}} - iA_{\bar{i}})\phi = 0$ for $M > 0$ and $D_i\phi = 0$ for $M < 0$. The form of the solutions are

$$\begin{aligned} M > 0 : \quad \phi(z, \bar{z}) &= (1 + \rho^2)^{-|M|/2} f_M(z_1, z_2), & m^2 &= 4|M|, \\ M = 0 : \quad \phi(z, \bar{z}) &= \phi_0, & m^2 &= 0, \\ M < 0 : \quad \phi(z, \bar{z}) &= (1 + \rho^2)^{-|M|/2} g_M(\bar{z}_1, \bar{z}_2), & m^2 &= 4|M|. \end{aligned} \quad (5.11)$$

where f_M and g_M are holomorphic polynomials of degree $|M|$. The degeneracy of the lowest modes is set by the number of such polynomials, and is $(|M| + 1)(|M| + 2)/2$.

As for the case of $\mathbb{P}^1 \times \mathbb{P}^1$ the scalar modes come in two types. One corresponds to the four-dimensional vector $A_\mu \otimes 1$, which is not twisted. The masses and degeneracies of this mode can be directly computed from the standard scalar Laplacian. The second type of mode corresponds to transverse scalar degrees of freedom. Such transverse scalars are valued in the normal bundle, $\mathcal{O}_{\mathbb{P}^2}(-3)$. ‘Zero modes’ - i.e. holomorphic sections of the bundle - can occur only in the presence of at least three units of flux. In this case the form of the zero mode is given by solving the equation

$$D_{\bar{i}}\phi = (\partial_{\bar{i}} - iA_{\bar{i}})\phi = 0, \quad (5.12)$$

where the flux is twisted by three units, $M \rightarrow M - 3$. As non-vanishing flux is not compatible with supersymmetry in the geometric regime, such modes will not be massless, and the computation of their mass will require a twisting component to be introduced in the naive eigenvalue equation.

5.2 Fermions on \mathbb{P}^2

To formulate fermions on \mathbb{P}^2 and the Dirac equation we need to establish a vierbein and compute the spin connection. We require a set of orthonormal frame vectors $\tilde{e}_{\mu\alpha}$ satisfying

$$g^{\mu\nu} \tilde{e}_{\mu\alpha} \tilde{e}_{\nu\beta} = \frac{1}{2} \delta_{\alpha\bar{\beta}}, \quad (5.13)$$

This complex vierbein is given by

$$\begin{aligned} \tilde{e}_1 &= \frac{1}{2} \frac{1}{\rho(1 + \rho^2)} (\bar{z}_1 dz_1 + \bar{z}_2 dz_2), \\ \tilde{e}_{\bar{1}} &= \frac{1}{2} \frac{1}{\rho(1 + \rho^2)} (z_1 d\bar{z}_1 + z_2 d\bar{z}_2), \\ \tilde{e}_2 &= \frac{1}{2} \frac{1}{\rho(1 + \rho^2)^{1/2}} (z_2 dz_1 - z_1 dz_2), \\ \tilde{e}_{\bar{2}} &= \frac{1}{2} \frac{1}{\rho(1 + \rho^2)^{1/2}} (\bar{z}_2 d\bar{z}_1 - \bar{z}_1 d\bar{z}_2). \end{aligned} \quad (5.14)$$

We can write the metric as

$$ds^2 = (\tilde{e}_1 + \tilde{e}_{\bar{1}})^2 + \left(\frac{\tilde{e}_1 - \tilde{e}_{\bar{1}}}{i} \right)^2 + (\tilde{e}_2 + \tilde{e}_{\bar{2}})^2 + \left(\frac{\tilde{e}_2 - \tilde{e}_{\bar{2}}}{i} \right)^2$$

$$= \frac{1}{(1+\rho^2)^2} d\rho^2 + \frac{\rho^2}{(1+\rho^2)^2} \sigma_z^2 + \frac{\rho^2}{(1+\rho^2)} \sigma_x^2 + \frac{\rho^2}{(1+\rho^2)} \sigma_y^2, \quad (5.15)$$

where we have defined

$$\begin{aligned} d\rho &= \frac{1}{2\rho} [(\bar{z}_1 dz_1 + \bar{z}_2 dz_2) + (z_1 d\bar{z}_1 + z_2 d\bar{z}_2)], \\ \sigma_z &= \frac{1}{2i\rho^2} [(\bar{z}_1 dz_1 + \bar{z}_2 dz_2) - (z_1 d\bar{z}_1 + z_2 d\bar{z}_2)], \\ \sigma_x &= \frac{1}{2\rho^2} [(z_2 dz_1 - z_1 dz_2) + (\bar{z}_2 d\bar{z}_1 - \bar{z}_1 d\bar{z}_2)], \\ \sigma_y &= \frac{1}{2i\rho^2} [(z_2 dz_1 - z_1 dz_2) - (\bar{z}_2 d\bar{z}_1 - \bar{z}_1 d\bar{z}_2)]. \end{aligned} \quad (5.16)$$

The one forms σ_i are the left invariant SU(2) one forms that satisfy

$$d\sigma_x = 2\sigma_y \wedge \sigma_z, \quad d\sigma_y = 2\sigma_z \wedge \sigma_x, \quad d\sigma_z = 2\sigma_x \wedge \sigma_y.$$

We can then write

$$ds^2 = e_1^2 + e_2^2 + e_3^2 + e_4^2, \quad (5.17)$$

with the real vierbein e_i given by

$$e_1 = \frac{1}{(1+\rho^2)} d\rho, \quad e_2 = \frac{\rho}{(1+\rho^2)} \sigma_z, \quad e_3 = \frac{\rho}{(1+\rho^2)^{1/2}} \sigma_x, \quad e_4 = \frac{\rho}{(1+\rho^2)^{1/2}} \sigma_y. \quad (5.18)$$

If we define \hat{e}_a as the dual basis to e_a given by $\hat{e}_a = e_a^m \partial_m$, we obtain

$$\begin{aligned} \hat{e}_1 &= \frac{(1+\rho^2)}{\rho} [z_1 \partial_{z_1} + z_2 \partial_{z_2} + \bar{z}_1 \partial_{\bar{z}_1} + \bar{z}_2 \partial_{\bar{z}_2}], \\ \hat{e}_2 &= \frac{(1+\rho^2)}{i\rho} [-z_1 \partial_{z_1} - z_2 \partial_{z_2} + \bar{z}_1 \partial_{\bar{z}_1} + \bar{z}_2 \partial_{\bar{z}_2}], \\ \hat{e}_3 &= \frac{(1+\rho^2)^{1/2}}{\rho} [\bar{z}_2 \partial_{z_1} - \bar{z}_1 \partial_{z_2} + z_2 \partial_{\bar{z}_1} - z_1 \partial_{\bar{z}_2}], \\ \hat{e}_4 &= \frac{(1+\rho^2)^{1/2}}{i\rho} [-\bar{z}_2 \partial_{z_1} + \bar{z}_1 \partial_{z_2} + z_2 \partial_{\bar{z}_1} - z_1 \partial_{\bar{z}_2}], \end{aligned} \quad (5.19)$$

The metric compatible spin-connection is easily computed using the Cartan structure equations

$$de^\alpha + \omega^\alpha_\beta \wedge e^\beta = 0. \quad (5.20)$$

Modulo antisymmetry properties the non-vanishing terms are

$$\omega^{12} = -\frac{(1-\rho^2)}{\rho} e_2, \quad \omega^{13} = -\frac{1}{\rho} e_3, \quad \omega^{14} = -\frac{1}{\rho} e_4, \quad (5.21)$$

$$\omega^{23} = \frac{1}{\rho} e_4, \quad \omega^{24} = \frac{-1}{\rho} e_3, \quad \omega^{34} = \frac{(1+2\rho^2)}{\rho} e_2. \quad (5.22)$$

The Dirac equation for a fermion zero mode is

$$ie^m_\alpha \tilde{\gamma}^\alpha \left(\partial_m + \frac{1}{8} [\tilde{\gamma}^\alpha, \tilde{\gamma}^\beta] \omega_{m\alpha\beta} - iA_m \right) \psi = 0, \quad (5.23)$$

with the gamma matrices $\tilde{\gamma}^i$ as in eq. (2.5). The kinetic part of the Dirac equation is

$$ie^m{}_\alpha \tilde{\gamma}^\alpha \partial_m = \begin{pmatrix} 0 & \mathcal{D}_+ \\ \mathcal{D}_- & 0 \end{pmatrix}, \quad (5.24)$$

where

$$\begin{aligned} \mathcal{D}_+ &= \begin{pmatrix} \frac{2(1+\rho^2)}{\rho} (\bar{z}_1 \partial_{\bar{z}_1} + \bar{z}_2 \partial_{\bar{z}_2}) & \frac{2i(1+\rho^2)^{1/2}}{\rho} (\bar{z}_2 \partial_{z_1} - \bar{z}_1 \partial_{z_2}) \\ \frac{2i(1+\rho^2)^{1/2}}{\rho} (z_2 \partial_{\bar{z}_1} - z_1 \partial_{\bar{z}_2}) & \frac{2(1+\rho^2)}{\rho} (z_1 \partial_{z_1} + z_2 \partial_{z_2}) \end{pmatrix}, \\ \mathcal{D}_- &= \begin{pmatrix} \frac{-2(1+\rho^2)}{\rho} (z_1 \partial_{z_1} + z_2 \partial_{z_2}) & \frac{2i(1+\rho^2)^{1/2}}{\rho} (\bar{z}_2 \partial_{z_1} - \bar{z}_1 \partial_{z_2}) \\ \frac{2i(1+\rho^2)^{1/2}}{\rho} (z_2 \partial_{\bar{z}_1} - z_1 \partial_{\bar{z}_2}) & \frac{-2(1+\rho^2)}{\rho} (\bar{z}_1 \partial_{\bar{z}_1} + \bar{z}_2 \partial_{\bar{z}_2}) \end{pmatrix}. \end{aligned} \quad (5.25)$$

The spin connection term is

$$ie^\mu{}_\delta \tilde{\gamma}^\delta \frac{1}{8} \omega_{\alpha\beta m} [\tilde{\gamma}^\alpha, \tilde{\gamma}^\beta] = \frac{1}{2\rho} \begin{pmatrix} 0 & -3\rho^2 \mathbb{I} \\ -(\rho^2 + 6)\mathbb{I} & 0 \end{pmatrix}. \quad (5.26)$$

As for the $\mathbb{P}^1 \times \mathbb{P}^1$ case we wish to use non-trivial magnetic flux to generate bifundamental chiral fermions. We first focus on line bundles, namely Abelian magnetic flux backgrounds. We shall subsequently discuss the more complicated case of non-Abelian bundles in section 5.4 below.

As there is only a single 2-cycle, and as the Kähler form itself is topologically non-trivial, the magnetic flux background satisfies $F = \lambda J$ for some λ . To turn on the U(1) gauge bundle, we choose

$$A_m = \frac{iM}{2} \left(\frac{z^i d\bar{z}^{\bar{i}}}{(1+u)} - \frac{\bar{z}^{\bar{i}} dz^i}{(1+u)} \right) = M\rho e_2, \quad (5.27)$$

giving

$$F = dA = iM \frac{dz^i \wedge d\bar{z}^{\bar{i}}}{(1+u)} - iM \frac{\bar{z}^{\bar{i}} dz^i \wedge z^j d\bar{z}^{\bar{j}}}{(1+u)^2} = 2MJ, \quad (5.28)$$

with $\int_{\mathbb{P}^1} F = 2\pi M$.

Using the fact that $e_\alpha \cdot e_\beta = \delta_{\alpha\beta}$, it follows that the gauge coupling term in the Dirac equation, prior to twisting, is

$$+ie^m{}_\alpha \tilde{\gamma}^\alpha (-iA_m) = \gamma^2 M\rho = M\rho \begin{pmatrix} 0 & \sigma_z \\ \sigma_z & 0 \end{pmatrix}. \quad (5.29)$$

The Dirac equation

$$ie^m{}_\alpha \tilde{\gamma}^\alpha \left(\partial_m + \frac{1}{8} [\tilde{\gamma}^\alpha, \tilde{\gamma}^\beta] \omega_{m\alpha\beta} - iA_m \right) \psi = 0. \quad (5.30)$$

can now be solved. Writing the fermion as $\begin{pmatrix} \psi_1 & \psi_2 & \psi_3 & \psi_4 \end{pmatrix}^T$, the equations factorise into separate forms for ‘left’-handed $\begin{pmatrix} \psi_1 & \psi_2 \end{pmatrix}^T$ and ‘right’-handed $\begin{pmatrix} \psi_3 & \psi_4 \end{pmatrix}^T$ modes, where ‘left’ and ‘right’ refer to chirality in the \mathbb{P}^2 . All modes correspond to left-handed spinors in four dimensions.

The Dirac equation for left handed particles is

$$(\mathcal{D}_- + \mathcal{B})\psi_L = 0 \tag{5.31}$$

which is

$$\begin{pmatrix} \frac{-2(1+\rho^2)}{\rho}(z_1\partial_{z_1} + z_2\partial_{z_2}) - \frac{(1-2M)\rho^2+6}{2\rho} & \frac{2i(1+\rho^2)^{1/2}}{\rho}(\bar{z}_2\partial_{z_1} - \bar{z}_1\partial_{z_2}) \\ \frac{2i(1+\rho^2)^{1/2}}{\rho}(z_2\partial_{\bar{z}_1} - z_1\partial_{\bar{z}_2}) & \frac{-2(1+\rho^2)}{\rho}(\bar{z}_1\partial_{\bar{z}_1} + \bar{z}_2\partial_{\bar{z}_2}) - \frac{(1+2M)\rho^2+6}{2\rho} \end{pmatrix} \begin{pmatrix} \psi_1 \\ \psi_2 \end{pmatrix} = 0.$$

The Dirac equation for right handed particles is

$$(\mathcal{D}_+ + \mathcal{A})\psi_R = 0$$

which is

$$\begin{pmatrix} \frac{2(1+\rho^2)}{\rho}(\bar{z}_1\partial_{\bar{z}_1} + \bar{z}_2\partial_{\bar{z}_2}) - \frac{(3-2M)\rho}{2} & \frac{2i(1+\rho^2)^{1/2}}{\rho}(\bar{z}_2\partial_{z_1} - \bar{z}_1\partial_{z_2}) \\ \frac{2i(1+\rho^2)^{1/2}}{\rho}(z_2\partial_{z_1} - z_1\partial_{z_2}) & \frac{2(1+\rho^2)}{\rho}(z_1\partial_{z_1} + z_2\partial_{z_2}) - \frac{(3+2M)\rho}{2} \end{pmatrix} \begin{pmatrix} \psi_3 \\ \psi_4 \end{pmatrix} = 0.$$

Zero mode solutions are present only for the right handed particles [21].⁶ Normalised solutions take the form $\psi_R = (\psi_3, \psi_4)$ with

$$\begin{pmatrix} \psi_3 \\ \psi_4 \end{pmatrix} = \begin{pmatrix} f(z_1, z_2)(1 + \rho^2)^{\frac{3}{4} - \frac{M}{2}} \\ g(\bar{z}_1, \bar{z}_2)(1 + \rho^2)^{\frac{3}{4} + \frac{M}{2}} \end{pmatrix}, \tag{5.32}$$

where f and g are holomorphic polynomials of positive degree. Note that these are local solutions of the Dirac equation, valid only within this patch. Requiring that the wavefunctions are normalisable and square integrable gives

- For $|M| < 3/2$, there are no normalisable zero modes.
- For $M \geq 3/2$, we requires $\psi_2 = 0$, and $f(z_1, z_2)$ to be a polynomial in powers of z_1 and z_2 of degrees less than or equal to $|M|/2 - 3/4$.
- or $M \leq -3/2$, we requires $\psi_1 = 0$, and $g(\bar{z}_1, \bar{z}_2)$ to be a polynomial in powers of \bar{z}_1 and \bar{z}_2 of degrees less than or equal to $|M|/2 - 3/4$.

⁶The reason for this can be understood from the form of the left-handed equations. The $\frac{6}{2\rho}$ term present at small ρ causes wavefunctions to have the singular behaviour $\psi \sim \rho^{-3}$ near $\rho \sim 0$.

Twisting

The above solutions are written in terms of half-integral fluxes. This is because it is necessary that the fermionic wavefunctions be globally well-defined. It is well known that \mathbb{P}^2 is not a spin manifold, as the second Stiefel-Whitney class $H^2(\mathbb{P}^2, \mathbb{Z}_2)$ is non-zero. \mathbb{P}^2 does not admit a globally defined *spin* structure. For any integral $M \in \mathbb{Z}$, the wavefunctions of eq. (5.32) cannot be globally defined: for appropriate choices of patches A, B and C the patch transition functions satisfy

$$\mathcal{O}_{AB}\mathcal{O}_{BC}\mathcal{O}_{CA} = -1. \tag{5.33}$$

However this problem is resolved if $M \in \mathbb{Z} + 1/2$ rather than $M \in \mathbb{Z}$. In this case the transition functions necessarily incorporate both gauge and spin components, and there is an additional -1 in eq. (5.33) from the half-integral gauge field. The fermionic wavefunctions are then globally well-defined, and the fermions transform as sections of a *spin^c* bundle rather than a *spin* bundle. In the context of \mathbb{P}^2 , the necessity of the half-integral gauge background that allows the fermions to be globally defined was first realised by Hawking and Pope [31]. In modern language it corresponds to the cancellation of the Freed-Witten anomaly [32].

For the case of D7-branes wrapping a \mathbb{P}^2 embedded in a Calabi-Yau, this half-integral shift in the gauge background is automatically generated from the twisting necessary to account for the nontrivial normal bundle. The discussion is very similar to the $\mathbb{P}^1 \times \mathbb{P}^1$ case discussed above. The action of the central $U(1)$ on tangent vectors is

$$\begin{pmatrix} z \\ w \end{pmatrix} \rightarrow \begin{pmatrix} e^{i\theta} & 0 \\ 0 & e^{i\theta} \end{pmatrix} \begin{pmatrix} z \\ w \end{pmatrix}, \tag{5.34}$$

which corresponds to an action on spinors of

$$\tilde{\Lambda} = -\frac{\theta}{4}([\gamma_2, \gamma_1] + [\gamma_4, \gamma_3]) \tag{5.35}$$

$$= \begin{pmatrix} 0 & 0 & 0 & 0 \\ 0 & 0 & 0 & 0 \\ 0 & 0 & i\theta & 0 \\ 0 & 0 & 0 & -i\theta \end{pmatrix} \tag{5.36}$$

As before the twisting corresponds to a replacement of the central $U(1)$ generator J by $J \pm 2R$, where the choice of the sign is arbitrary. The difference for \mathbb{P}^2 is that the twist corresponds to $M \rightarrow M \pm 3/2$ in the Dirac equation, as the normal bundle is now $\mathcal{O}_{\mathbb{P}^2}(-3)$ rather than $\mathcal{O}_{\mathbb{P}^1 \times \mathbb{P}^1}(-2, -2)$. For convenience we take $M \rightarrow M + 3/2$ for (ψ_1, ψ_2) and $M \rightarrow M - 3/2$ for (ψ_3, ψ_4) . The different signs for (ψ_1, ψ_2) and (ψ_3, ψ_4) correspond to the different R-charges of these spinors.

This twisting procedure implies that the Dirac equation should automatically be solved with a half-integral flux background. The solutions of the twisted Dirac equation now take the form

$$\begin{pmatrix} \psi_3 \\ \psi_4 \end{pmatrix} = \begin{pmatrix} f(z_1, z_2)(1 + \rho^2)^{\frac{3}{2} - \frac{M}{2}} \\ g(\bar{z}_1, \bar{z}_2)(1 + \rho^2)^{\frac{M}{2}} \end{pmatrix}. \tag{5.37}$$

For the zero flux case $M = 0$, there is a constant zero mode, which corresponds to the gaugino of 4-dimensional super Yang-Mills. In general (5.37) has $\frac{(M-1)(M-2)}{2}$ zero modes.

Zero mode counting

As for the $\mathbb{P}^1 \times \mathbb{P}^1$ case the number and form of the zero modes on dimensional reduction is in principle contained in eq. (5.37). However due to the dimensional reduction structure,

$$\psi_{8d} = \begin{pmatrix} W & X \\ Y & Z \end{pmatrix} = \begin{pmatrix} (\text{Adj}(\mathbf{P}), \mathbf{1}) & (\mathbf{P}, \bar{\mathbf{Q}}) \\ (\bar{\mathbf{P}}, \mathbf{Q}) & (\mathbf{1}, \text{Adj}(\mathbf{Q})) \end{pmatrix}, \tag{5.38}$$

fermions in the X and Y sectors are both sensitive to the difference in magnetic flux between the W and Z sectors. We suppose that the net amount of magnetic flux in the W sector is M . From section 2 the charge felt by the bifundamental fermions comes from the $[A, \lambda]$ term and therefore is $+M$ for the X modes and $-M$ for the Y modes. The chiral spectrum consists of \mathcal{N}_M modes in the $(\mathbf{P}, \bar{\mathbf{Q}})$ representation from the X sector, and \mathcal{N}_{-M} modes in the $(\bar{\mathbf{P}}, \mathbf{Q})$ representation from the Y sector. The net number of chiral zero modes is the difference $\mathcal{N}_M - \mathcal{N}_{-M}$.

All zero modes come from the ψ_3 and ψ_4 sectors. For Abelian bundles, we see that

$$\mathcal{N}_M = \frac{(M-1)(M-2)}{2}, \quad \mathcal{N}_{-M} = \frac{(M+1)(M+2)}{2}. \tag{5.39}$$

and so

$$\mathcal{N}_M - \mathcal{N}_{-M} = -3M. \tag{5.40}$$

There exist chiral zero modes whenever the flux is non-vanishing. As $c(\mathbb{P}^2) = (1+e)^3$ with e the fundamental class, and $c_1(F) = Me$, eq. (5.40) coincides with the index $\int c_1(\mathbb{P}^2)c_1(F)$. In all cases the spectrum is non-supersymmetric as $J \wedge F \neq 0$, which follows immediately from the fact that $F = \lambda J$. Furthermore, the fact that all zero modes lie in the (ψ_3, ψ_4) sector means that no non-vanishing Yukawa couplings can be generated using only Abelian fluxes.

Vectors on \mathbb{P}^2

The fact that with abelian fluxes all zero modes lie in the (ψ_3, ψ_4) sectors and no zero modes can be found in the (ψ_1, ψ_2) sectors means that there are no vector zero modes for abelian fluxes on \mathbb{P}^2 . Vector zero modes are partners to the (ψ_1, ψ_2) modes, and the absence of fermionic zero modes means that there are no bosonic modes that can be considered as ‘zero modes’. Of course there are still vector Kaluza-Klein modes which are eigenfunctions of eq. (2.29), but these are intrinsically massive.

The structure of the Yukawa interactions means that the absence of any vector zero modes implies that all Yukawa couplings vanish, even for nonsupersymmetric brane configurations. This motivates the inclusion of non-Abelian bundles, which will allow (ψ_1, ψ_2) zero modes to exist and thus generate non-vanishing Yukawas.

5.3 Normalisation and overlap integrals

The generic form of an Abelian zero-mode wavefunction on \mathbb{P}^2 is given by (we again take $M > 0$)

$$\psi_M^{KL} = \frac{1}{\mathcal{N}_M^{KL}} \frac{z_1^K z_2^L}{(1 + z_1 \bar{z}_1 + z_2 \bar{z}_2)^{\frac{M-1}{2}}}. \quad (5.41)$$

It then follows from the metric (5.5) that

$$\begin{aligned} (\mathcal{N}_M^{KL})^2 &= \int d^2 z_1 d^2 z_2 \sqrt{g} (\psi_M^{KL})^\dagger \psi_M^{KL} \\ &= 4\pi^2 R^4 \int dr_1 dr_2 \frac{r_1^{2K+1} r_2^{2L+1}}{(1 + r_1^2 + r_2^2)^{M+2}} \\ &\equiv 4\pi^2 R^4 I_M^{KL}, \end{aligned} \quad (5.42)$$

where as for \mathbb{P}^1 we have defined the standard integral I_M^{KL} . This is also the integral that will arise when computing Yukawa couplings and the triple overlap of wavefunctions. Now

$$\begin{aligned} I_M^{KL} &= \int dr_1 r_1^{2K+1} \int dr_2 \frac{r_2^{2L+1}}{(1 + r_1^2 + r_2^2)^{M+2}} \\ &= \int dr_1 \frac{r_1^{2K+1}}{(1 + r_1^2)^{M-L+1}} \int_{r_1=const} d\alpha \frac{\alpha^{2L+1}}{(1 + \alpha^2)^{M+2}}, \end{aligned} \quad (5.43)$$

where we have defined $\alpha = \frac{r_2}{\sqrt{1+r_1^2}}$. Using the \mathbb{P}^1 result (3.29) for I_M^K , we obtain

$$I_M^{KL} = I_{M-L}^K I_{M+1}^L = \frac{\Gamma(K+1)\Gamma(L+1)\Gamma(M-L-K)}{4\Gamma(M+2)}. \quad (5.44)$$

It therefore follows that the normalisation constant \mathcal{N}_M^{KL} is given by

$$|\mathcal{N}_M^{KL}|^2 = 4\pi^2 R^4 I_M^{KL} = \frac{\pi^2 \Gamma(K+1)\Gamma(L+1)\Gamma(M-L-K)}{\Gamma(M+2)}. \quad (5.45)$$

In this case the triple overlap integrals take the form:

$$Y_{MNP}^{K_1 L_1, K_2 L_2} = \left[\frac{4\pi R^4}{\mathcal{N}_M^{K_1 L_1} \mathcal{N}_N^{K_2 L_2} \mathcal{N}_P^{K_1+K_2, L_1+L_2}} \right] I_{\frac{M+N+P-1}{2}}^{K_1+K_2, L_1+L_2} \quad (5.46)$$

As for the previously discussed cases of \mathbb{P}^1 and $\mathbb{P}^1 \times \mathbb{P}^1$, the $SU(3)/\mathbb{Z}_3$ isometry of the canonical \mathbb{P}^2 metric acts as a flavour symmetry on wavefunction zero modes, and the possible degeneracies of zero modes are set by the possible sizes of $SU(3)$ representations. In particular, in the limit that the bulk is infinitely large the Yukawa couplings will be ordered by an exact $SU(3)$ family symmetry. In the limit that the bulk is large but finite, an approximate $SU(3)$ family symmetry will exist.

5.4 Non-abelian bundles

For the case of Abelian bundles, all solutions are right-handed and therefore all Yukawa couplings vanish. In addition to the intrinsic interest of doing so, this also gives a motivation for turning on a non-Abelian bundle on the brane, as this will allow left-handed zero modes to exist.

We follow [33, 34] to obtain an SU(2) bundle on \mathbb{P}^2 , deriving the gauge bundle from the tangent bundle. Our choice for the SU(2) generators T^i $i=2,3,4$ is⁷

$$T^2 = \frac{\sigma^z}{2} \quad T^3 = \frac{\sigma^x}{2} \quad T^4 = \frac{\sigma^y}{2} \quad (5.47)$$

These satisfy the SU(2) algebra $[T^i, T^j] = \epsilon^{ijk} T^k$ with ϵ^{ijk} fully anti-symmetric, $\epsilon^{234} = 1$. The gauge potential $A_\mu = A_\mu^i T^i$ is given by $A_\mu^i = \omega_\mu^{1i} - \frac{1}{2} \epsilon^{ijk} \omega_\mu^{jk}$. Explicitly this gives

$$A^2 = \frac{-2 - \rho^2}{\rho} e_2, \quad A^3 = \frac{-2}{\rho} e_3, \quad A^4 = \frac{-2}{\rho} e_4. \quad (5.48)$$

The corresponding field strength $F = dA + A \wedge A$ is

$$\begin{aligned} F^2 &= 2(e_1 \wedge e_2 - e_3 \wedge e_4), \\ F^3 &= 2(e_1 \wedge e_3 - e_4 \wedge e_2), \\ F^4 &= 2(e_1 \wedge e_4 - e_2 \wedge e_3). \end{aligned} \quad (5.49)$$

This is manifestly anti-selfdual and therefore a solution to the Yang-Mills equations of motion.

We consider backgrounds in which an SU(2) subsector of the U(Q+2) theory obtains a vev of the above form. The gauge and adjoint fermion fields can be written as

$$F = \begin{pmatrix} F_{\text{SU}(2)} & 0 \\ 0 & 0 \end{pmatrix}, \quad \psi = \begin{pmatrix} W & X \\ Y & Z \end{pmatrix}.$$

Here W, X, Y and Z are blocks of size 2×2 , $2 \times Q$, $Q \times 2$ and $Q \times Q$ respectively, and the instanton is valued in the W block. The instanton background breaks the gauge group down to $U(1) \times U(Q)$. The X and Y blocks experience a non-trivial effect from the SU(2) instanton.

The ψ equations of motion are

$$ie^m_\alpha \tilde{\gamma}^\alpha \left(\nabla_m \psi - i[A_m, \psi] \right) = 0 \quad (5.50)$$

where ∇_m is the covariant derivative, $\nabla_m = \partial_m + \frac{1}{8} [\tilde{\gamma}^\alpha, \tilde{\gamma}^\beta] w_{m\alpha\beta}$.

For column vectors in block X (we shall denote such doublets by (θ_1, θ_2)) this reduces to

$$i\gamma^M \nabla_M \begin{pmatrix} \theta_1 \\ \theta_2 \end{pmatrix} + \begin{pmatrix} -\frac{(2+\rho^2)}{2\rho} \gamma^2 + M\rho\gamma^2 & -\frac{1}{\rho}(\gamma_3 - i\gamma_4) \\ -\frac{1}{\rho}(\gamma_3 + i\gamma_4) & \frac{(2+\rho^2)}{2\rho} \gamma^2 + M\rho\gamma^2 \end{pmatrix} \begin{pmatrix} \theta_1 \\ \theta_2 \end{pmatrix} = 0, \quad (5.51)$$

⁷This rather unconventional choice is related to our choice of the gamma matrices in (2.5).

where we have also included M units of $U(1)$ flux in addition to the $SU(2)$ bundle.⁸ The equations of motion for the the right and left handed modes decouple. For the right handed modes one has

$$\mathcal{D}_+\theta_1^R + \frac{1}{2\rho} \begin{pmatrix} -2 + (2M - 4)\rho^2 & 0 \\ 0 & +2 - (2M + 2)\rho^2 \end{pmatrix} \theta_1^R - \frac{1}{2\rho} \begin{pmatrix} 0 & 0 \\ 4 & 0 \end{pmatrix} \theta_2^R = 0 \quad (5.52)$$

$$\mathcal{D}_+\theta_2^R + \frac{1}{2\rho} \begin{pmatrix} 2 + (2M - 2)\rho^2 & 0 \\ 0 & -2 - (2M + 4)\rho^2 \end{pmatrix} \theta_2^R - \frac{1}{2\rho} \begin{pmatrix} 0 & 4 \\ 0 & 0 \end{pmatrix} \theta_1^R = 0 \quad (5.53)$$

and for the left handed modes

$$\mathcal{D}_-\theta_1^L + \frac{1}{2\rho} \begin{pmatrix} -8 + (2M - 2)\rho^2 & 0 \\ 0 & -4 - 2M\rho^2 \end{pmatrix} \theta_1^L - \frac{1}{2\rho} \begin{pmatrix} 0 & 0 \\ 4 & 0 \end{pmatrix} \theta_2^L = 0 \quad (5.54)$$

$$\mathcal{D}_-\theta_2^L + \frac{1}{2\rho} \begin{pmatrix} -4 + 2M\rho^2 & 0 \\ 0 & -8 - (2M + 2)\rho^2 \end{pmatrix} \theta_2^L - \frac{1}{2\rho} \begin{pmatrix} 0 & 4 \\ 0 & 0 \end{pmatrix} \theta_1^L = 0 \quad (5.55)$$

with \mathcal{D}_+ and \mathcal{D}_- as defined in (5.25).

For the doublets obtained from the rows of the block Y , which we denote by (λ_1, λ_2) (5.50) reduces to

$$i\gamma^M \nabla_M \begin{pmatrix} \lambda_1 \\ \lambda_2 \end{pmatrix} - \begin{pmatrix} -\frac{(2+\rho^2)}{2\rho}\gamma^2 + M\rho\gamma^2 & -\frac{1}{\rho}(\gamma_3 + i\gamma_4) \\ -\frac{1}{\rho}(\gamma_3 - i\gamma_4) & \frac{(2+\rho^2)}{2\rho}\gamma^2 + M\rho\gamma^2 \end{pmatrix} \begin{pmatrix} \lambda_1 \\ \lambda_2 \end{pmatrix} = 0 \quad (5.56)$$

which yields

$$\mathcal{D}_+\lambda_1^R + \frac{1}{2\rho} \begin{pmatrix} 2 - (2M + 2)\rho^2 & 0 \\ 0 & -2 + (2M - 4)\rho^2 \end{pmatrix} \lambda_1^R + \frac{1}{2\rho} \begin{pmatrix} 0 & 4 \\ 0 & 0 \end{pmatrix} \lambda_2^R = 0 \quad (5.57)$$

$$\mathcal{D}_+\lambda_2^R + \frac{1}{2\rho} \begin{pmatrix} -2 - (2M + 4)\rho^2 & 0 \\ 0 & 2 + (2M - 2)\rho^2 \end{pmatrix} \lambda_2^R + \frac{1}{2\rho} \begin{pmatrix} 0 & 0 \\ 4 & 0 \end{pmatrix} \lambda_1^R = 0 \quad (5.58)$$

for the right handed modes and

$$\mathcal{D}_-\lambda_1^L + \frac{1}{2\rho} \begin{pmatrix} -4 - 2M\rho^2 & 0 \\ 0 & -8 + (2M - 2)\rho^2 \end{pmatrix} \lambda_1^L + \frac{1}{2\rho} \begin{pmatrix} 0 & 4 \\ 0 & 0 \end{pmatrix} \lambda_2^L = 0$$

$$\mathcal{D}_-\lambda_2^L + \frac{1}{2\rho} \begin{pmatrix} -8 - (2M + 2)\rho^2 & 0 \\ 0 & -4 + 2M\rho^2 \end{pmatrix} \lambda_2^L + \frac{1}{2\rho} \begin{pmatrix} 0 & 0 \\ 4 & 0 \end{pmatrix} \lambda_1^L = 0 \quad (5.59)$$

for the left handed modes.

We now discuss solutions of these equations. We focus on solutions from the ‘X’ block as the ‘Y’ block case is similar. We shall also not try to be exhaustive but instead shall focus our search on ‘s-wave’ solutions that can be written solely as a function of ρ . This simplifies the search considerably, as

$$\begin{aligned} (\bar{z}_1 \partial_{\bar{z}_1} + \bar{z}_2 \partial_{\bar{z}_2}) f(\rho) &= \frac{\rho}{2} f'(\rho), \\ (\bar{z}_2 \partial_{z_1} - \bar{z}_1 \partial_{z_2}) f(\rho) &= 0. \end{aligned} \quad (5.60)$$

⁸As in our earlier discussion, one requires $M \in \mathbb{Z} + \frac{1}{2}$ for a consistent $spin^c$ structure.

We first look to solve the right-handed equations. We recall these equations had many solutions when only U(1) flux was turned on and we expect this qualitative feature to persist. We note that for the upper component of θ_1^R and the lower component of θ_2^R the equations decouple and we are just left with a single first order equation to solve. The equations for $\theta_1^{R,u}$ and $\theta_2^{R,d}$ are respectively

$$\begin{aligned}\partial_\rho \theta_1^{R,u} &= \frac{(2 + (4 - 2M)\rho^2) \theta_1^{R,u}}{2\rho(1 + \rho^2)}, \\ \partial_\rho \theta_2^{R,d} &= \frac{(2 + (4 + 2M)\rho^2) \theta_2^{R,d}}{2\rho(1 + \rho^2)}.\end{aligned}\tag{5.61}$$

These have solutions

$$\theta_1^{R,u} = f(z_1, z_2)\rho(1 + \rho^2)^{\frac{1-M}{2}}, \quad \theta_2^{R,d} = g(\bar{z}_1, \bar{z}_2)\rho(1 + \rho^2)^{\frac{1+M}{2}}.$$

Normalisability as $\theta \rightarrow \infty$ requires that $\left|\frac{\theta}{\rho}\right| \rightarrow 0$ as $\rho \rightarrow \infty$. This implies that for the $\theta_1^{R,u}$ solutions, $M \geq 3/2$, while for the $\theta_2^{R,d}$ solutions we need $M \leq -3/2$.

In the case of Abelian flux, no left-handed solutions existed at all. One motivation for studying non-abelian flux backgrounds is that left-handed solutions to the Dirac equation can now be found. Considering the left-handed equations, as with the right-handed modes the $\theta_1^{L,u}$ and $\theta_2^{R,d}$ modes are decoupled. In this case we can check that no holomorphic normalisable modes can exist in the vicinity of $\rho = 0$. However, if we consider the coupled system of equations for $\theta_1^{L,d}$ and $\theta_2^{L,u}$ then it turns out that finite and normalisable solutions can be found. To see this, note that in the vicinity of $\rho = 0$, these coupled equations become

$$\partial_\rho \begin{pmatrix} \theta_1^{L,d} \\ \theta_2^{L,u} \end{pmatrix} = \frac{1}{\rho} \begin{pmatrix} -2 & -2 \\ -2 & -2 \end{pmatrix} \begin{pmatrix} \theta_1^{L,d} \\ \theta_2^{L,u} \end{pmatrix}.\tag{5.62}$$

These equations have a constant mode $\begin{pmatrix} \theta_1^{L,d} \\ \theta_2^{L,u} \end{pmatrix} \sim \begin{pmatrix} \lambda \\ -\lambda \end{pmatrix}$ near the origin. At large $\rho \rightarrow \infty$, the equations take the form

$$\partial_\rho \begin{pmatrix} \theta_1^{L,d} \\ \theta_2^{L,u} \end{pmatrix} = \frac{1}{\rho} \begin{pmatrix} -M & -\frac{2}{\rho^2} \\ -\frac{2}{\rho^2} & M \end{pmatrix} \begin{pmatrix} \theta_1^{L,d} \\ \theta_2^{L,u} \end{pmatrix}.\tag{5.63}$$

These equations admit normalisable solutions as $\rho \rightarrow \infty$ for $M = \pm 1/2$, when the $\rho \rightarrow \infty$ behaviour is $\theta_1^{L,d} \sim \rho^M, \theta_2^{L,u} \sim \rho^{-M}$.

We can check numerically that these asymptotic behaviours patch together into a single normalisable solution extending from $\rho = 0$ to $\rho = \infty$. This is illustrated in figure 1. We were not able to obtain an analytic expression for this zero mode.

6. Conclusions

Local brane realisations of the Standard Model around a (resolved) singularity have various phenomenologically attractive properties. They also drastically reduce the geometric

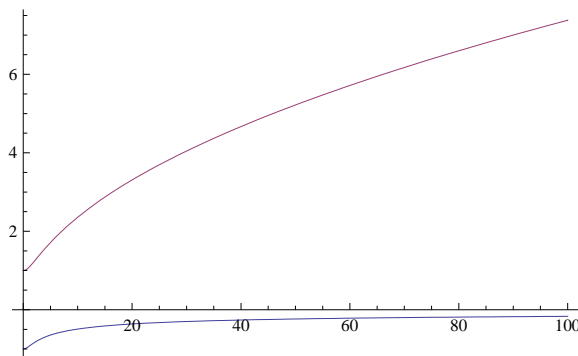


Figure 1: A plot of the numerical behaviour of $\theta_1^{L,d}$ and $\theta_2^{L,u}$ for the coupled left-handed zero mode, shown for $M = -1/2$. The growing (but normalisable) mode is $\theta_1^{L,d}$ and the decaying mode $\theta_2^{L,u}$.

complexity associated with global models. Furthermore, such local Standard Model constructions are forced on us by certain moduli stabilisation scenarios, such as the LARGE volume models of [16, 17].

In this paper we have studied certain aspects of such local D7 brane models in great detail. The paper has been devoted to studying the precise form of the wavefunctions that arise, through solving the appropriate differential equation for the zero modes. Compared to algebro-geometric approaches, the advantage of having explicit wavefunctions is that these are not restricted to holomorphic information and also contains information about the Kähler metric - the overlap of the wavefunctions directly gives the physical Yukawa couplings rather than simply the holomorphic component. The methods of this paper can be seen as an extension of the approach of [19] to local D7 brane models. Our particular emphasis has been the cases of branes wrapped on $\mathbb{P}^1 \times \mathbb{P}^1$ and \mathbb{P}^2 , as these spaces represent the simplest examples where we can solve the Dirac and associated equations. We have dimensionally reduced super Yang-Mills on these surfaces, and solved the (twisted) equations to obtain the normalised zero modes for bifundamental fields that transform as scalars, spinors and vectors on the internal space. We have worked with both supersymmetric and non-supersymmetric brane configurations, and with Abelian and non-Abelian magnetic flux backgrounds. In \mathbb{P}^2 even though the Yukawa couplings vanish for both supersymmetric and non-supersymmetric Abelian flux, non-Abelian fluxes can lead to non-vanishing Yukawa couplings.

The cycle geometries have isometries which manifest themselves as flavour symmetries of the low-energy theory, acting on the zero modes. Where comparison is possible the zero mode degeneracies agree with those computed using index formulae. The Yukawa couplings vanish if we require a vanishing FI term, $J \wedge F = 0$. If we allow $J \wedge F \neq 0$, and assume either that the D-terms are cancelled by quantum corrections or field vevs or that the brane configuration is non-supersymmetric, then the Yukawa couplings can be non-vanishing.

Let us close by outlining some directions for future work.

1. We would like to extend this work to realistic D-brane models, where the gauge

group resembles that of the MSSM. This will also require the construction of globally consistent brane configurations. This paper has focussed on obtaining the normalised wavefunctions and we have not imposed tadpole cancellation conditions. This is less important here where our focus is simply on the form of the wavefunctions, but for a complete and realistic model it will be necessary to ensure that the full brane configuration is consistent.

2. It would be instructive to understand the connection between the geometric Yukawa couplings and the Yukawa couplings in the singular limit, along the lines of [35]. In the singular limit anti-branes are supersymmetric objects and the Yukawa couplings can be non-vanishing for supersymmetric brane configurations. In the geometric limit the Yukawa couplings automatically vanish for supersymmetric brane configurations. It would be nice to understand better the interpolation between these two regimes.
3. It would be interesting to generalise the computations in this paper to more complex surfaces, such as del Pezzos. In some cases analytic metrics exist (e.g. see [36]) and it may be possible to explicitly solve the Dirac equation and compute the zero mode wavefunctions.
4. The techniques developed here may be extended to the case of Euclidean D3-branes wrapping the corresponding 4-cycle. This could be interesting to study instanton induced effective couplings in the four-dimensional effective action (see [37] for a recent review on these techniques).
5. The 4-surface metrics, for example the use of the Fubini-Study metric for \mathbb{P}^2 , are those appropriate for the case that the surface is embedded in a non-compact Calabi-Yau. In this case the local metric contains isometries that act as flavour symmetries of the Dirac equation. It would be interesting to obtain the form of the wavefunctions for surfaces embedded in Calabi-Yaus that are compact but of very large volume. In this case the largeness of the bulk provides a small breaking parameter for the local flavour symmetry [28]. By obtaining the wavefunctions on such perturbed spaces, possibly using numerical methods such as [38–41], it will be possible to study explicitly the small breaking of flavour symmetry.

Acknowledgments

For advice, encouragement and information we would like to thank Chris Beasley, Michele Cicoli, Diego Correa, Brian Dolan, Matt Dolan, Nick Dorey, Gary Gibbons, Sven Krippendorf, Harvey Reall, James Sparks, David Tong and Toby Wiseman. JC is funded by Trinity College, Cambridge and would like to thank the University of Texas at Austin for hospitality while part of this work was carried out. This work was supported in part by the National Science Foundation under NSF Grant PHY-0455649. AM is funded by STFC. Part of this work was carried out during his participation in the Tata Monsoon workshop of the International Center for Theoretical Studies of TIFR, he thanks the organizers for hospitality and support. FQ is funded by STFC and a Royal Society Wolfson Merit Award.

He thanks the Mitchell family and the organizers of the Cook Branch's meeting 2008 for hospitality.

A. Kaluza-Klein vector modes

In this appendix we briefly note that scalar eigenfunctions of the Laplace equation automatically generate vector eigenfunctions, allowing the spectrum and profiles of KK vector modes to be derived from those of scalar vector modes. We use here the notation of section 2.

To do so we suppose that $\Phi^{j,ab} = X^{jk} \tilde{D}_k \Omega^{ab}$, where Ω^{ab} is some scalar mode, and X^{jk} is a covariantly constant tensor. In particular X^{jk} may be either J^{jk} or g^{jk} , where J_{jk} is the almost complex structure. $\tilde{D}_k = \nabla_k - i\langle A \rangle_k^{ab}$ is the gauge covariant derivative acting on scalars. Then

$$\begin{aligned} \tilde{D}_i \tilde{D}^i \Phi^{j,ab} &= \tilde{D}_i \tilde{D}^i X^{jk} \tilde{D}_k \Omega^{ab} \\ &= \tilde{D}_i \left(X^{jk} [\tilde{D}^i, \tilde{D}_k] + X^{jk} \tilde{D}_k \tilde{D}^i \right) \Omega^{ab}. \end{aligned} \quad (\text{A.1})$$

Acting on a scalar, $[\tilde{D}_i, \tilde{D}_k] \Omega^{ab} = -i\langle G \rangle_{ik}^{ab} \Omega^{ab}$, and so we obtain

$$\tilde{D}_i \tilde{D}^i \Phi^{j,ab} = \tilde{D}_i \left(-iX^{jk} \langle G \rangle_k^i{}^{,ab} \Omega^{ab} \right) + \tilde{D}_i (X^{jk} \tilde{D}_k \tilde{D}^i) \Omega^{ab}. \quad (\text{A.2})$$

Now, the flux is such that $\langle G \rangle_{ij} \sim \epsilon_{ij}$ and so is covariantly constant under ∇ . Therefore,

$$\tilde{D}_i \langle G \rangle_{ik}^{ab} = \langle G \rangle_{ik}^{ab} \tilde{D}_i.$$

We then obtain

$$\begin{aligned} \tilde{D}_i \tilde{D}^i \Phi^{j,ab} &= -iX^{jk} \langle G \rangle_k^i{}^{,ab} \tilde{D}_i \Omega^{ab} + X^{jk} \tilde{D}_i \tilde{D}_k \tilde{D}^i \Omega^{ab} \\ &= -iX^{jk} \langle G \rangle_k^i{}^{,ab} \tilde{D}_i \Omega^{ab} + X^{jk} [\tilde{D}_i, \tilde{D}_k] (\tilde{D}^i \Omega^{ab}) + X^{jk} \tilde{D}_k (\tilde{D}_i \tilde{D}^i \Omega^{ab}). \end{aligned} \quad (\text{A.3})$$

Now as before $[\tilde{D}_i, \tilde{D}_k]$ on a vector gives $[\nabla_i, \nabla_k] - i\langle G \rangle_{ik}^{ab}$, and so we get

$$\begin{aligned} -\frac{1}{2g^2} \tilde{D}_i \Phi_j^{ba} \tilde{D}^i \Phi^{j,ab} &= \frac{\Phi_j^{ba}}{2g^2} \left(-2iX^{jk} \langle G \rangle_{ik} \tilde{D}^i \Omega^{ab} \right. \\ &\quad \left. + X^{jk} [\nabla_i, \nabla_k] (\tilde{D}^i \Omega^{ab}) + X^{jk} \tilde{D}_k (\tilde{D}_i \tilde{D}^i \Omega^{ab}) \right). \end{aligned} \quad (\text{A.4})$$

$\Phi_j^{ba} = X_j^k \tilde{D}_k \Omega^{ba}$, giving⁹

$$\begin{aligned} -\frac{1}{2g^2} \tilde{D}_i \Phi_j^{ba} \tilde{D}^i \Phi^{j,ab} &= \frac{\tilde{D}_p \Omega^{ba}}{2g^2} \left(-2iX_j^p X^{jk} \langle G \rangle_{ik} \tilde{D}^i \Omega^{ab} \right) \\ &\quad + \frac{\tilde{D}_p \Omega^{ba}}{2g^2} X_j^p X^{jk} [\nabla_i, \nabla_k] (\tilde{D}^i \Omega^{ab}) + \frac{\tilde{D}_p \Omega^{ba}}{2g^2} X_j^p X^{jk} \tilde{D}_k (\tilde{D}_i \tilde{D}^i \Omega^{ab}). \end{aligned} \quad (\text{A.5})$$

⁹We suppress the ab indices in $\langle G \rangle$ to simplify the notation.

We now take $X_{jk} = g_{jk}$, and so $X_j^p X^{jk} = g^{pk}$. In this case

$$-\frac{1}{2g^2} \tilde{D}_i \Phi_j^{ba} \tilde{D}^i \Phi^{j,ab} = \frac{1}{2g^2} [(\tilde{D}_p \Omega)^{ba} (-2i \langle G \rangle_i^p) \tilde{D}^i \Omega^{ab} \quad (\text{A.6})$$

$$+ (\tilde{D}_k \Omega)^{ba} [\nabla_i, \nabla_k] (\tilde{D}^i \Omega^{ab}) + (\tilde{D}^k \Omega^{ba}) \tilde{D}_k (\tilde{D}_l \tilde{D}^l \Omega^{ab})]$$

$$= \frac{1}{2g^2} [(\Phi_p)^{ba} (-2i \langle G \rangle_i^p) \Phi_i^{ab}$$

$$+ (\Phi_k)^{ba} [\nabla_i, \nabla_k] (\Phi^{ab}) + (\Phi^{k,ba}) \tilde{D}_k (\tilde{D}_l \tilde{D}^l \Omega^{ab})] \quad (\text{A.7})$$

Combining (A.7) with (2.27) we obtain a total result of

$$\frac{1}{2g^2} (D^k \Omega^{ba}) \tilde{D}_k (\tilde{D}_l \tilde{D}^l \Omega^{ab}) = -\frac{m^2}{2g^2} (D^k \Omega^{ba}) (D_k \Omega_{ab}).$$

In particular, all the flux and curvature contributions have cancelled, and if Ω is a scalar eigenfunction of $\tilde{D}_i \tilde{D}^i$ with eigenvalue $-m^2$, then $\tilde{D}_k \Omega$ is also a vector eigenfunction with eigenvalue $-m^2$.

A similar result is obtained for $X_{jk} = J_{jk}$: the vector mode $\Phi^{j,ab} = X^{jk} \tilde{D}_k \Omega^{ab}$ is a vector eigenfunction with mass $-m^2$. On their own neither of these two modes satisfy the gauge-fixing condition $\tilde{D}_i \Phi^{i,ab} = 0$. However the gauge-fixing condition can be satisfied by writing

$$\Phi^{j,ab} = \alpha g^{jk} \tilde{D}_k \Omega^{ab} + \beta J^{jk} \tilde{D}_k \Omega^{ab}, \quad (\text{A.8})$$

for appropriate constants α and β .

B. Patches

In this section we give some details as to the explicit patch transition functions for the fermionic wavefunctions on \mathbb{P}^1 . We start with coordinates z, \bar{z} with

$$ds^2 = \frac{4dzd\bar{z}}{(1+z\bar{z})^2}. \quad (\text{B.1})$$

These coordinates are good for describing all of \mathbb{P}^1 except the point at ∞ . We denote this patch by \mathcal{A} . To describe the point at infinity, we must change patches to the patch \mathcal{B} coordinatised by $u = -1/z$. The functional form of the metric is unaltered,

$$ds^2 = \frac{4dud\bar{u}}{(1+u\bar{u})^2}. \quad (\text{B.2})$$

Associated with the patches \mathcal{A} and \mathcal{B} there are two separate vielbeins that are both valid in the overlap region $\mathcal{A} \cap \mathcal{B}$, $e_{\mathcal{A}}^1, e_{\mathcal{A}}^2$ and $e_{\mathcal{B}}^1, e_{\mathcal{B}}^2$. We have

$$e_{\mathcal{A},z}^1 = e_{\mathcal{A},\bar{z}}^1 = \frac{1}{1+z\bar{z}}, \quad e_{\mathcal{A},z}^2 = -e_{\mathcal{A},\bar{z}}^2 = \frac{i}{1+z\bar{z}},$$

$$e_{\mathcal{B},u}^1 = e_{\mathcal{B},\bar{u}}^1 = \frac{1}{1+u\bar{u}}, \quad e_{\mathcal{B},u}^2 = -e_{\mathcal{B},\bar{u}}^2 = \frac{i}{1+u\bar{u}}. \quad (\text{B.3})$$

Using the coordinate relation $u = -z^{-1}$ that holds on the overlap region, we find that the two vielbeins are related by

$$e_{\mathcal{B},z}^i = \left(\frac{\bar{z}}{z}\right) e_{\mathcal{A},z}^i, \quad e_{\mathcal{B},\bar{z}}^i = \left(\frac{z}{\bar{z}}\right) e_{\mathcal{A},\bar{z}}^i.$$

In terms of real vectors e^1 and e^2 , we can write

$$\begin{pmatrix} e_{\mathcal{B}}^1 \\ e_{\mathcal{B}}^2 \end{pmatrix} = \begin{pmatrix} \cos(2\theta) & -\sin(2\theta) \\ \sin(2\theta) & \cos(2\theta) \end{pmatrix} \begin{pmatrix} e_{\mathcal{A}}^1 \\ e_{\mathcal{A}}^2 \end{pmatrix}. \quad (\text{B.4})$$

Lifting this to an action on spinors using $\tilde{\Lambda} = \exp\left(\frac{1}{4}\omega^{\alpha\beta}\Lambda_{\alpha\beta}\right)$, we obtain $\psi_B = \mathcal{O}_{AB,spin}\psi_A$, with

$$\mathcal{O}_{AB,spin} = \begin{pmatrix} \left(\frac{\bar{z}}{z}\right)^{1/2} & 0 \\ 0 & \left(\frac{z}{\bar{z}}\right)^{1/2} \end{pmatrix}. \quad (\text{B.5})$$

In the presence of a nonvanishing gauge background there is an additional gauge contribution to the transition functions. The gauge fields on the two patches are

$$\begin{aligned} A_{\mathcal{A}} &= \frac{iM\bar{z}dz}{2(1+z\bar{z})} - \frac{iMzd\bar{z}}{2(1+z\bar{z})}, \\ A_{\mathcal{B}} &= \frac{iM\bar{u}du}{2(1+u\bar{u})} - \frac{iMud\bar{u}}{2(1+u\bar{u})}. \end{aligned} \quad (\text{B.6})$$

We can verify that on the overlap region these are related by

$$A_{\mathcal{B}} = A_{\mathcal{A}} + d\left(i\ln\left(\frac{\bar{z}}{z}\right)^{M/2}\right) \equiv A_1 + d\lambda, \quad (\text{B.7})$$

and so the gauge transition function is

$$\mathcal{O}_{AB,gauge} = e^{i\lambda} = e^{-\ln\left(\frac{\bar{z}}{z}\right)^{M/2}} = \left(\frac{z}{\bar{z}}\right)^{M/2}.$$

The overall patch transition function is then

$$\mathcal{O}_{AB} = \mathcal{O}_{AB,spin}\mathcal{O}_{AB,gauge} = \begin{pmatrix} \left(\frac{\bar{z}}{z}\right)^{\frac{1-M}{2}} & 0 \\ 0 & \left(\frac{z}{\bar{z}}\right)^{\frac{1+M}{2}} \end{pmatrix}. \quad (\text{B.8})$$

Acting on zero modes of the Dirac equation with the patch transition function, we obtain

$$\mathcal{O}_{AB} \begin{pmatrix} \psi_1(z, \bar{z}) \\ \psi_2(z, \bar{z}) \end{pmatrix} = \mathcal{O}_{AB} \begin{pmatrix} f_{\mathcal{A}}(\bar{z})(1+z\bar{z})^{\left(\frac{1-M}{2}\right)} \\ g_{\mathcal{A}}(z)(1+z\bar{z})^{\left(\frac{1+M}{2}\right)} \end{pmatrix} = \begin{pmatrix} f_{\mathcal{B}}(\bar{u})(1+u\bar{u})^{\left(\frac{1-M}{2}\right)} \\ g_{\mathcal{B}}(u)(1+u\bar{u})^{\left(\frac{1+M}{2}\right)} \end{pmatrix}, \quad (\text{B.9})$$

where both $f_{\mathcal{A}}, g_{\mathcal{A}}$ and $f_{\mathcal{B}}, g_{\mathcal{B}}$ are analytic polynomials of maximal degree $|M| - 1$. The patch transition functions therefore indeed take normalised solutions of the Dirac equation to normalised solutions of the Dirac equation.

References

- [1] R. Blumenhagen, M. Cvetič, P. Langacker and G. Shiu, *Toward realistic intersecting D-brane models*, *Ann. Rev. Nucl. Part. Sci.* **55** (2005) 71 [[hep-th/0502005](#)].
- [2] R. Blumenhagen, B. Körs, D. Lüst and S. Stieberger, *Four-dimensional string compactifications with D-branes, orientifolds and fluxes*, *Phys. Rept.* **445** (2007) 1 [[hep-th/0610327](#)].
- [3] F. Marchesano, *Progress in D-brane model building*, *Fortschr. Phys.* **55** (2007) 491 [[hep-th/0702094](#)].
- [4] D. Malyshev and H. Verlinde, *D-branes at singularities and string phenomenology*, *Nucl. Phys.* **171** (*Proc. Suppl.*) (2007) 139 [[arXiv:0711.2451](#)].
- [5] H.P. Nilles, S. Ramos-Sanchez, M. Ratz and P.K.S. Vaudrevange, *From strings to the MSSM*, [arXiv:0806.3905](#).
- [6] G. Aldazabal, L.E. Ibáñez, F. Quevedo and A.M. Uranga, *D-branes at singularities: a bottom-up approach to the string embedding of the standard model*, *JHEP* **08** (2000) 002 [[hep-th/0005067](#)];
J.F.G. Cascales, M.P. Garcia del Moral, F. Quevedo and A.M. Uranga, *Realistic D-brane models on warped throats: fluxes, hierarchies and moduli stabilization*, *JHEP* **02** (2004) 031 [[hep-th/0312051](#)].
- [7] L.F. Alday and G. Aldazabal, *In quest of 'just' the standard model on D-branes at a singularity*, *JHEP* **05** (2002) 022 [[hep-th/0203129](#)].
- [8] H. Verlinde and M. Wijnholt, *Building the standard model on a D3-brane*, *JHEP* **01** (2007) 106 [[hep-th/0508089](#)].
- [9] J. Gray, Y.-H. He, V. Jejjala and B.D. Nelson, *Exploring the vacuum geometry of $N = 1$ gauge theories*, *Nucl. Phys.* **B 750** (2006) 1 [[hep-th/0604208](#)].
- [10] M. Buican, D. Malyshev, D.R. Morrison, H. Verlinde and M. Wijnholt, *D-branes at singularities, compactification and hypercharge*, *JHEP* **01** (2007) 107 [[hep-th/0610007](#)].
- [11] M. Wijnholt, *Geometry of particle physics*, [hep-th/0703047](#).
- [12] C. Beasley, J.J. Heckman and C. Vafa, *GUTs and exceptional branes in F-theory — I*, [arXiv:0802.3391](#).
- [13] L. Aparicio, D.G. Cerdeno and L.E. Ibáñez, *Modulus-dominated SUSY-breaking soft terms in F-theory and their test at LHC*, *JHEP* **07** (2008) 099 [[arXiv:0805.2943](#)].
- [14] C. Beasley, J.J. Heckman and C. Vafa, *GUTs and exceptional branes in F-theory — II: experimental predictions*, [arXiv:0806.0102](#).
- [15] R. Tatar and T. Watari, *GUT relations from string theory compactifications*, [arXiv:0806.0634](#).
- [16] V. Balasubramanian, P. Berglund, J.P. Conlon and F. Quevedo, *Systematics of moduli stabilisation in Calabi-Yau flux compactifications*, *JHEP* **03** (2005) 007 [[hep-th/0502058](#)].
- [17] J.P. Conlon, F. Quevedo and K. Suruliz, *Large-volume flux compactifications: moduli spectrum and D3/D7 soft supersymmetry breaking*, *JHEP* **08** (2005) 007 [[hep-th/0505076](#)].
- [18] J.P. Conlon and D. Cremades, *The neutrino suppression scale from large volumes*, *Phys. Rev. Lett.* **99** (2007) 041803 [[hep-ph/0611144](#)].

- [19] D. Cremades, L.E. Ibáñez and F. Marchesano, *Computing Yukawa couplings from magnetized extra dimensions*, *JHEP* **05** (2004) 079 [[hep-th/0404229](#)].
- [20] H. Abe, T. Kobayashi and H. Ohki, *Magnetized orbifold models*, [arXiv:0806.4748](#).
- [21] C.N. Pope, *Eigenfunctions and spin (c) structures in CP^2* , *Phys. Lett.* **B 97** (1980) 417.
- [22] D. Karabali and V.P. Nair, *Quantum Hall effect in higher dimensions*, *Nucl. Phys.* **B 641** (2002) 533 [[hep-th/0203264](#)].
- [23] B.P. Dolan and C. Nash, *The standard model fermion spectrum from complex projective spaces*, *JHEP* **10** (2002) 041 [[hep-th/0207078](#)].
- [24] B.P. Dolan, *The spectrum of the Dirac operator on coset spaces with homogeneous gauge fields*, *JHEP* **05** (2003) 018 [[hep-th/0304037](#)].
- [25] R.P. Andrews and N. Dorey, *Spherical deconstruction*, *Phys. Lett.* **B 631** (2005) 74 [[hep-th/0505107](#)].
- [26] M. Bershadsky, C. Vafa and V. Sadov, *D-Branes and topological field theories*, *Nucl. Phys.* **B 463** (1996) 420 [[hep-th/9511222](#)].
- [27] N.K. Nielsen and P. Olesen, *An unstable Yang-Mills field mode*, *Nucl. Phys.* **B 144** (1978) 376.
- [28] C.P. Burgess et al., *Continuous global symmetries and hyperweak interactions in string compactifications*, *JHEP* **07** (2008) 073 [[arXiv:0805.4037](#)].
- [29] D.Z. Freedman and G.W. Gibbons, *New higher dimensional ricci flat Kähler metrics*, ITP Preprint, ITP-SB-80-48.
- [30] C.A. Lutken, *Geometry of the Z fold*, *J. Phys.* **A 21** (1988) 1889.
- [31] S.W. Hawking and C.N. Pope, *Generalized spin structures in quantum gravity*, *Phys. Lett.* **B 73** (1978) 42.
- [32] D.S. Freed and E. Witten, *Anomalies in string theory with D-branes*, [hep-th/9907189](#).
- [33] J.M. Charap and M.J. Duff, *Gravitational effects on Yang-Mills topology*, *Phys. Lett.* **B 69** (1977) 445.
- [34] G.W. Gibbons and C.N. Pope, *CP^2 as a gravitational instanton*, *Commun. Math. Phys.* **61** (1978) 239.
- [35] S.G. Nibbelink, D. Klevers, F. Ploger, M. Trapletti and P.K.S. Vaudrevange, *Compact heterotic orbifolds in blow-up*, *JHEP* **04** (2008) 060 [[arXiv:0802.2809](#)].
- [36] T. Oota and Y. Yasui, *Explicit toric metric on resolved Calabi-Yau cone*, *Phys. Lett.* **B 639** (2006) 54 [[hep-th/0605129](#)].
- [37] N. Akerblom, R. Blumenhagen, D. Lüst and M. Schmidt-Sommerfeld, *D-brane instantons in 4D supersymmetric string vacua*, *Fortschr. Phys.* **56** (2008) 313 [[arXiv:0712.1793](#)].
- [38] M. Headrick and T. Wiseman, *Numerical Ricci-flat metrics on K3*, *Class. and Quant. Grav.* **22** (2005) 4931 [[hep-th/0506129](#)].
- [39] M.R. Douglas, R.L. Karp, S. Lukic and R. Reinbacher, *Numerical Calabi-Yau metrics*, *J. Math. Phys.* **49** (2008) 032302 [[hep-th/0612075](#)].

- [40] C. Doran, M. Headrick, C.P. Herzog, J. Kantor and T. Wiseman, *Numerical Kähler-Einstein metric on the third del Pezzo*, *Commun. Math. Phys.* **282** (2008) 357 [[hep-th/0703057](#)].
- [41] V. Braun, T. Brelidze, M.R. Douglas and B.A. Ovrut, *Calabi-Yau metrics for quotients and complete intersections*, *JHEP* **05** (2008) 080 [[arXiv:0712.3563](#)].